

Helicobacter pylori Induces CCL20 Expression

メタデータ	言語: 出版者: American Society for Microbiology 公開日: 2007-11-20 キーワード (Ja): キーワード (En): 作成者: Tomimori, Koh, Uema, Eriko, Teruya, Hiromitsu, Ishikawa, Chie, Okudaira, Taeko, Senba, Masachika, Yamamoto, Kazuo, Matsuyama, Toshifumi, Kinjo, Fukunori, Fujita, Jiro, Mori, Naoki メールアドレス: 所属:
URL	http://hdl.handle.net/20.500.12000/2447

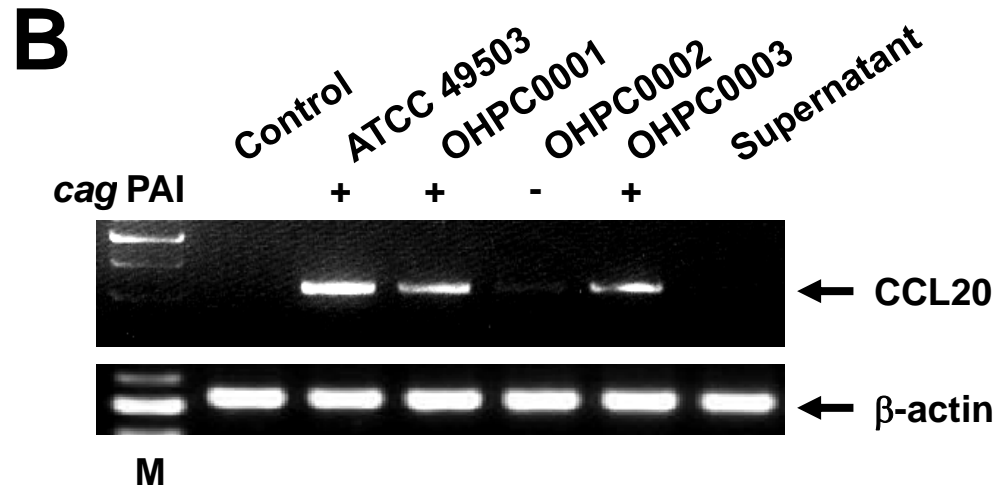
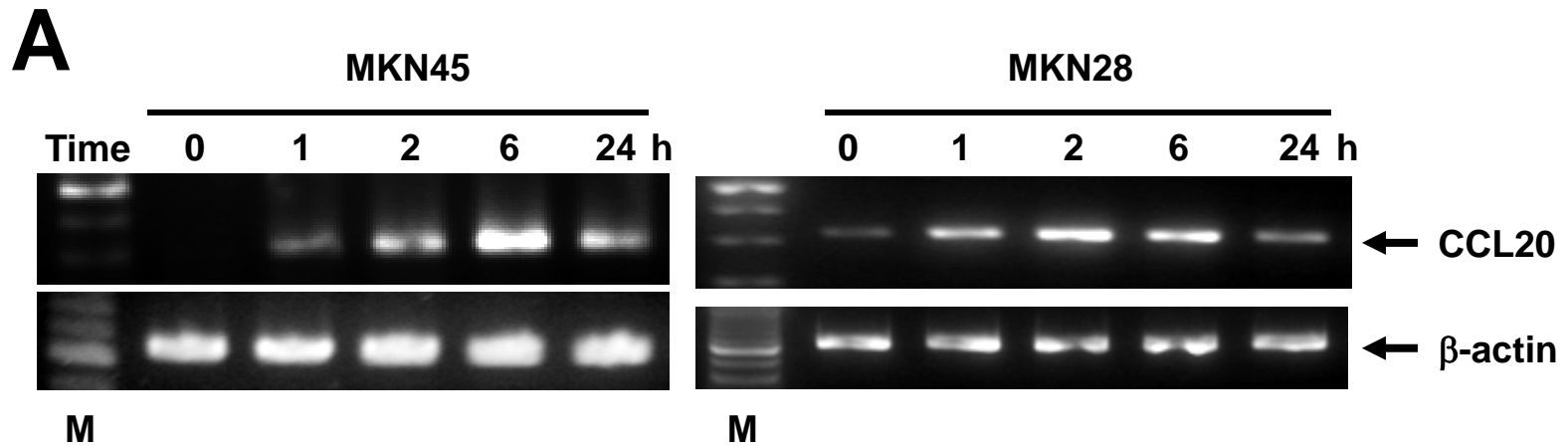


Figure 2

C

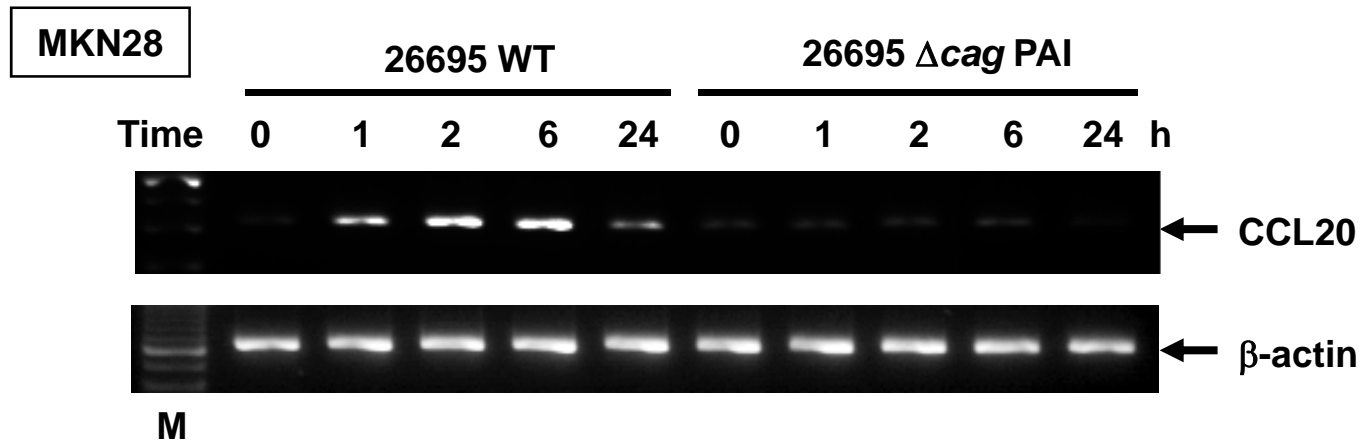
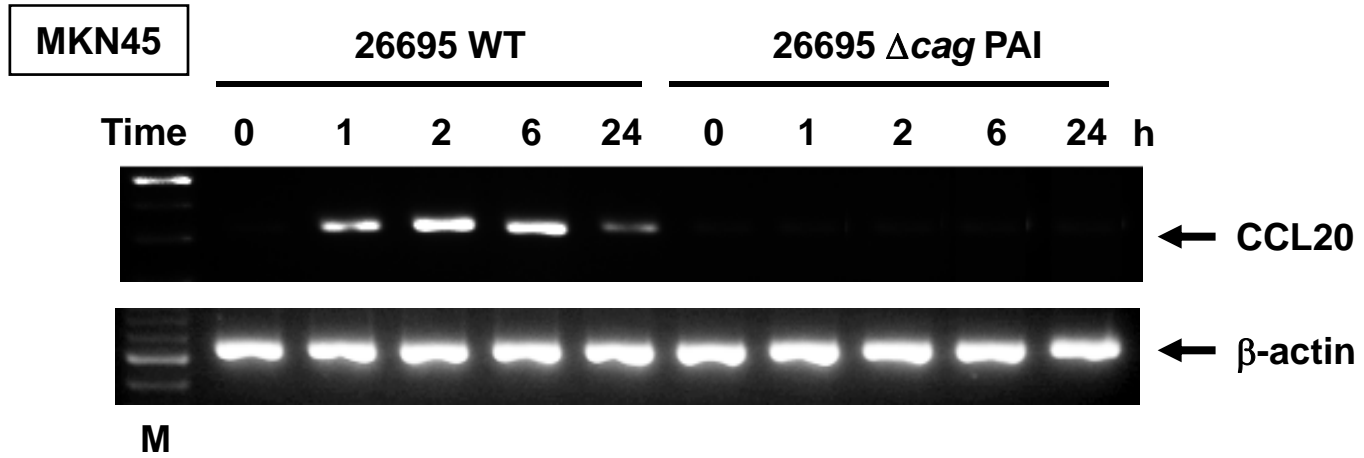


Figure 2

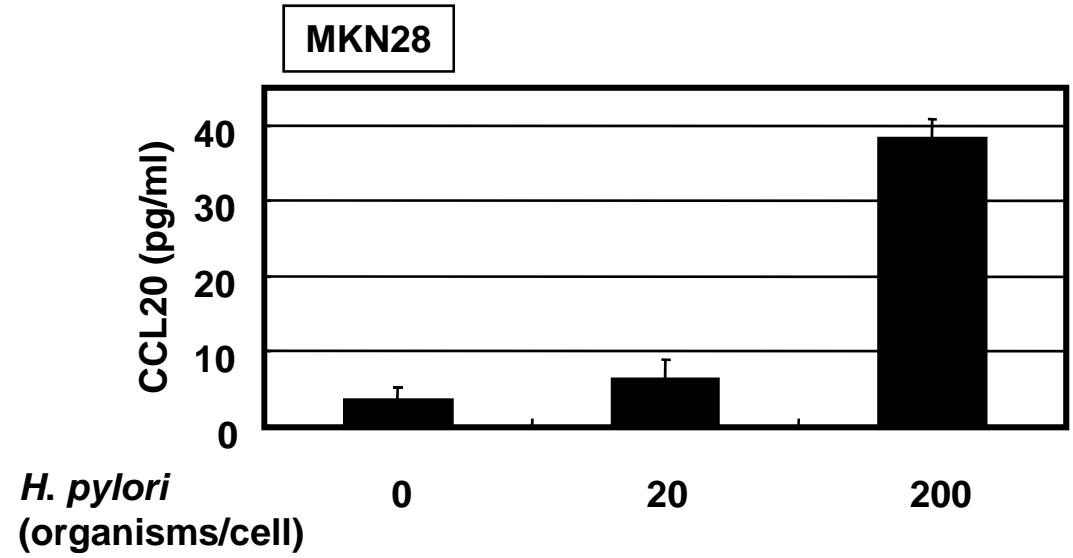
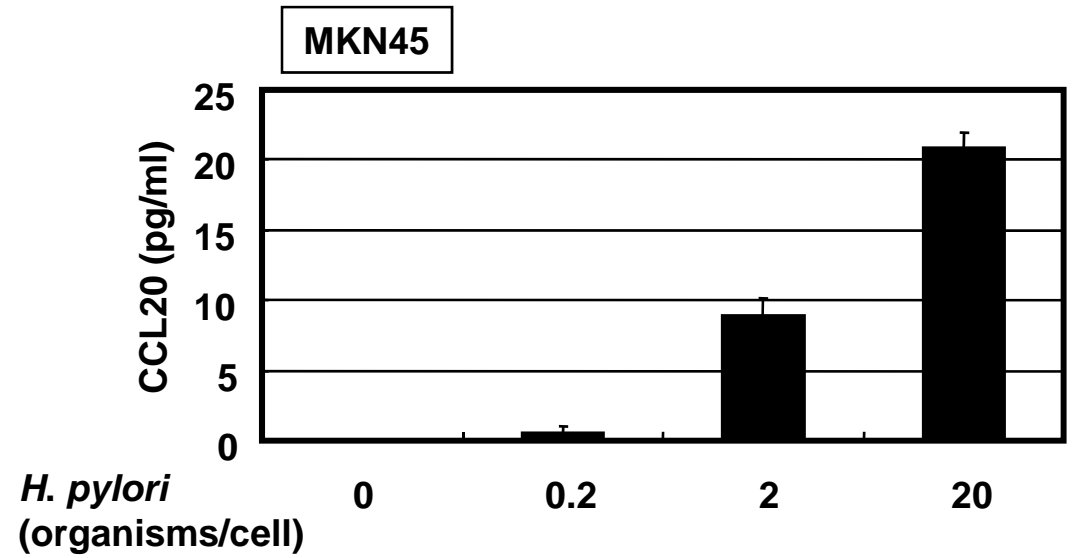


Figure 3

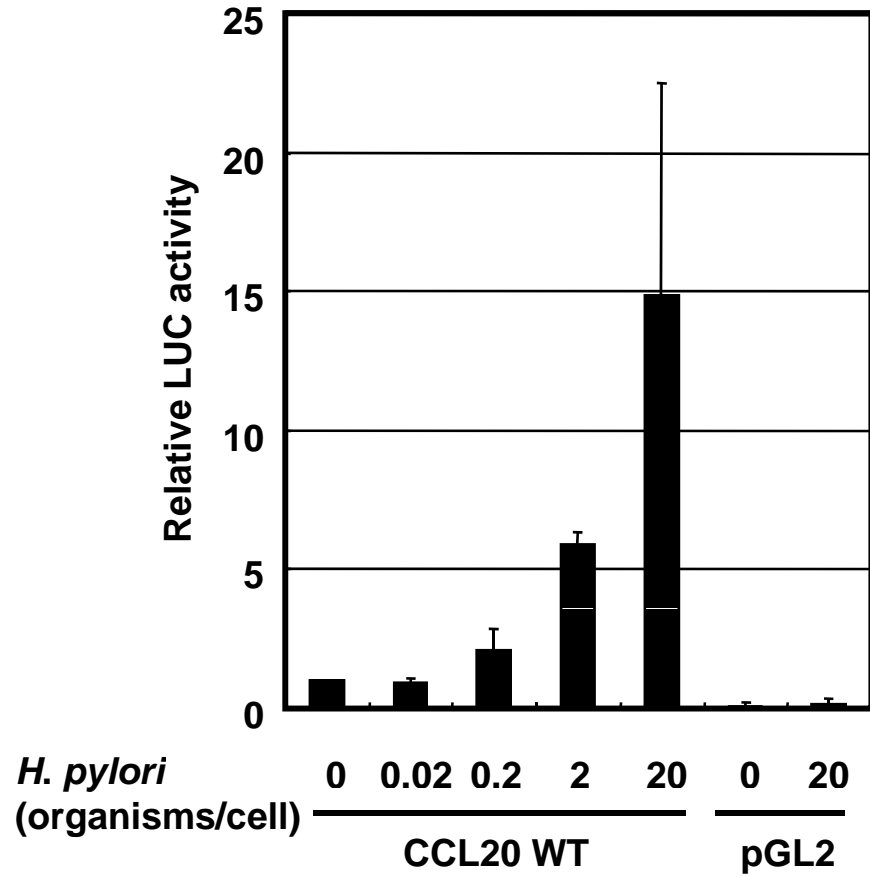
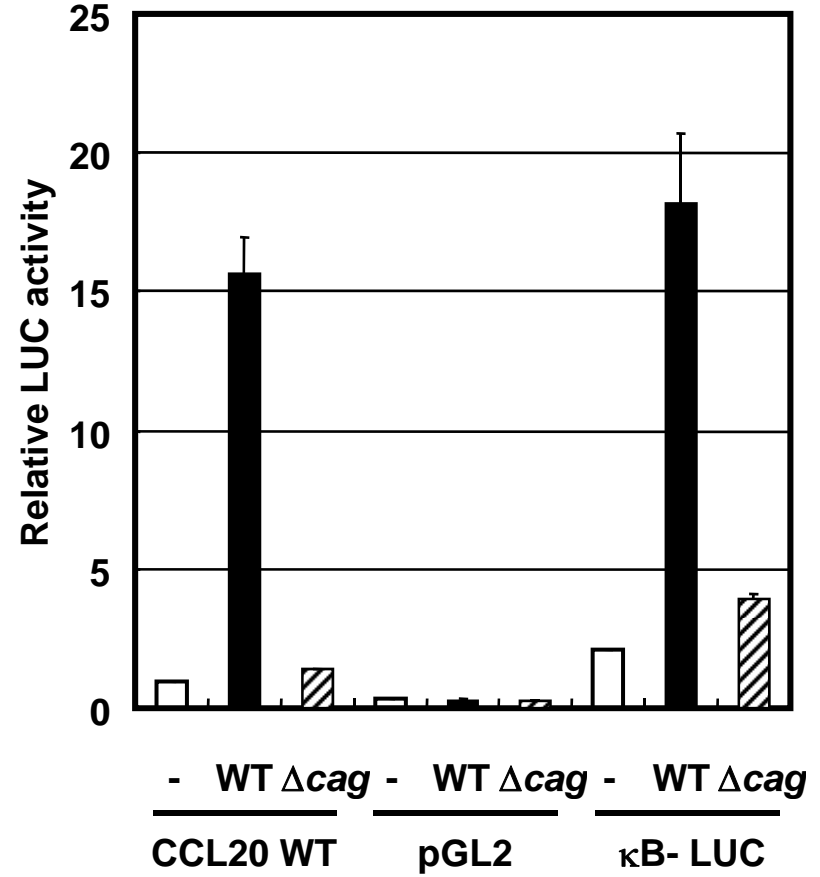
A**B**

Figure 4

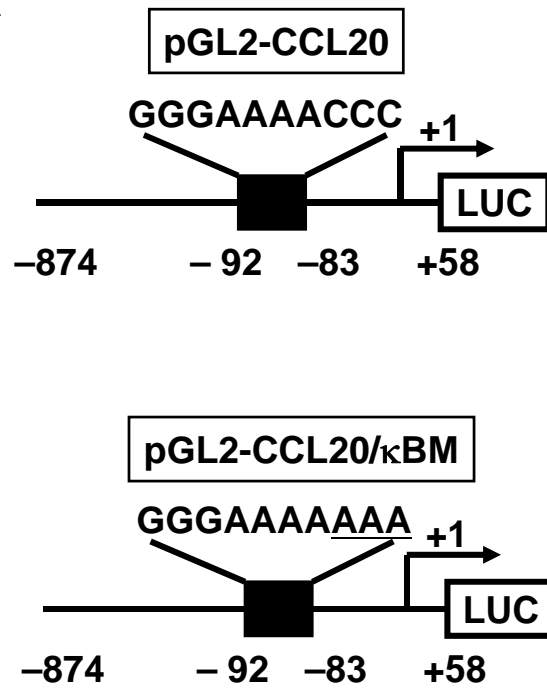
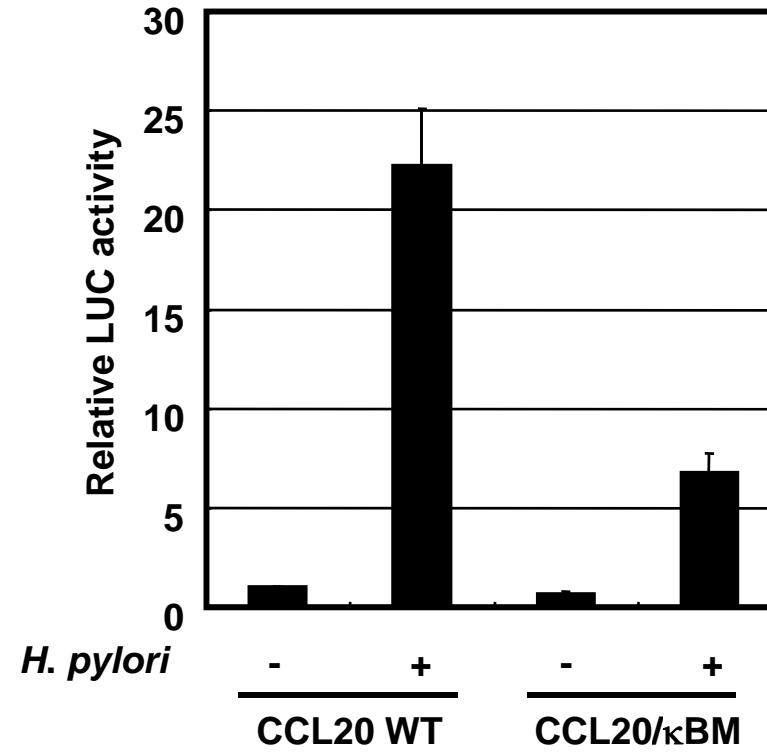
A**B**

Figure 5

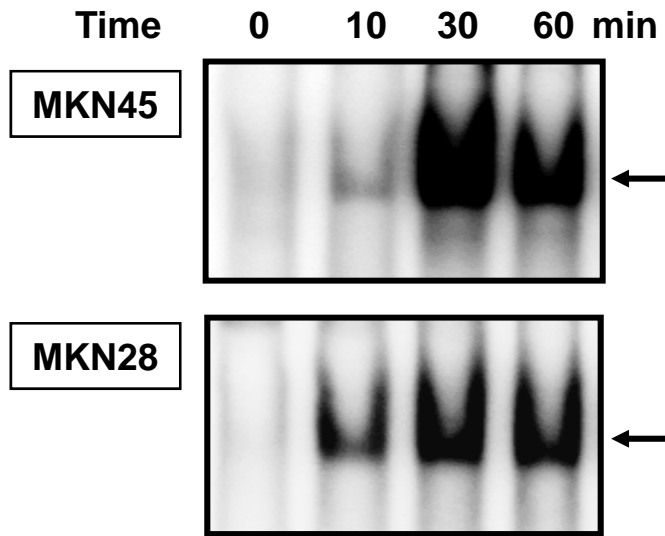
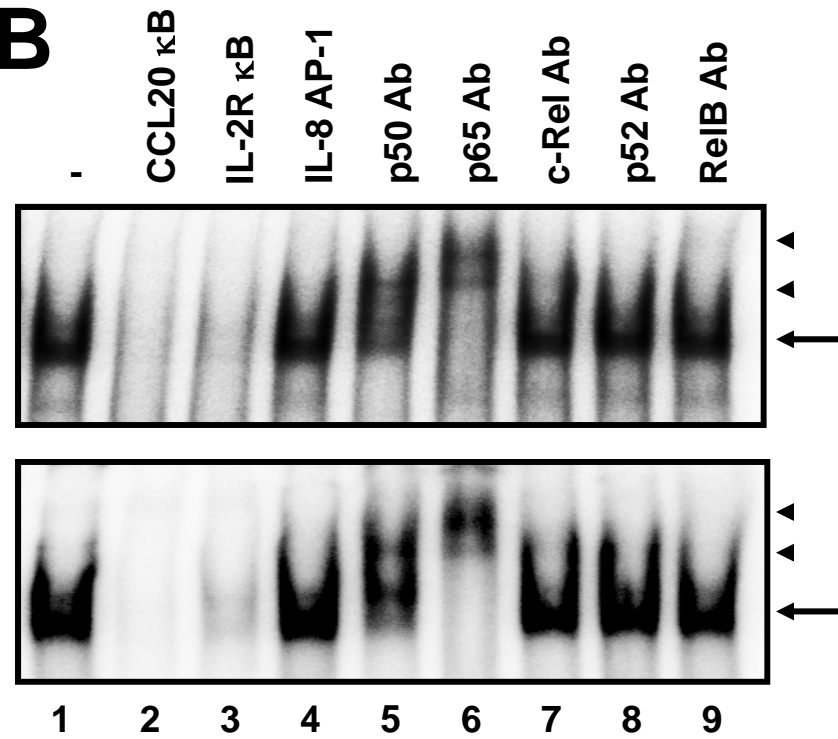
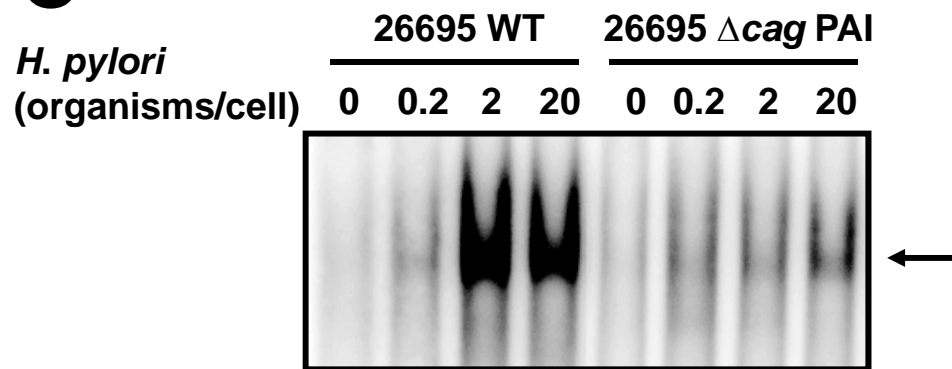
A**B****C**

Figure 6

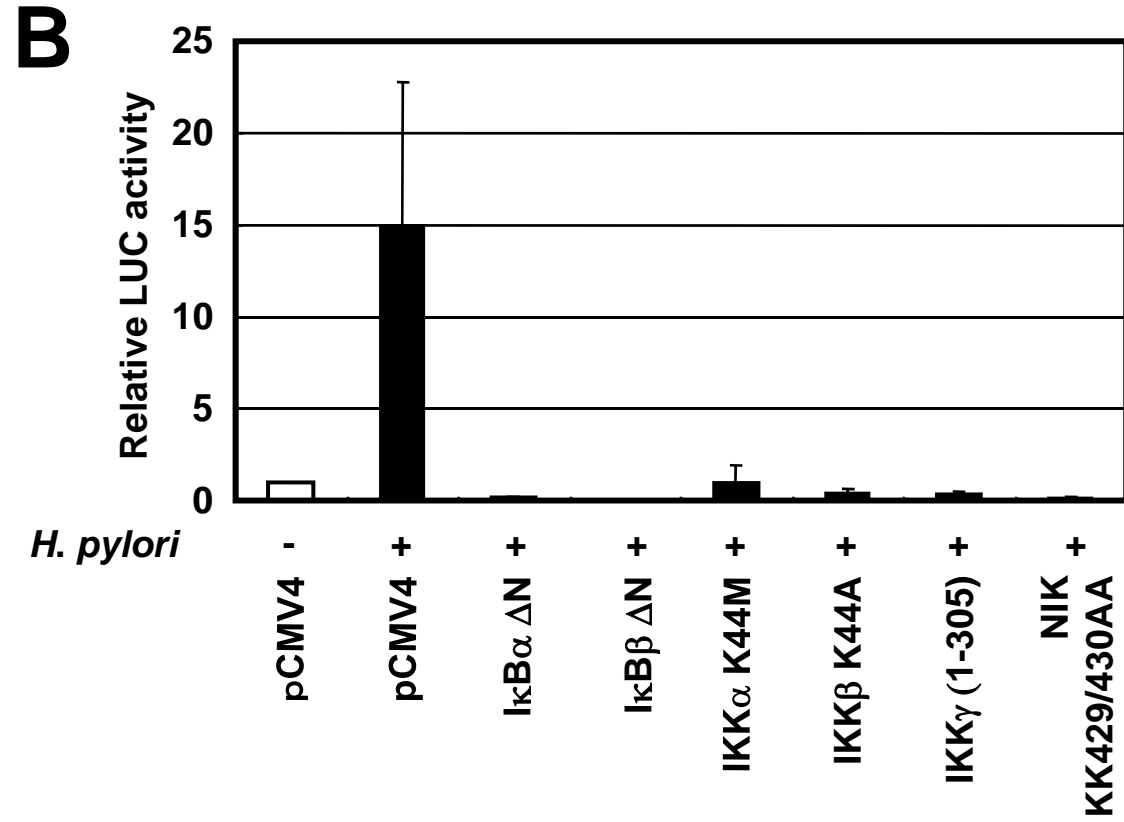
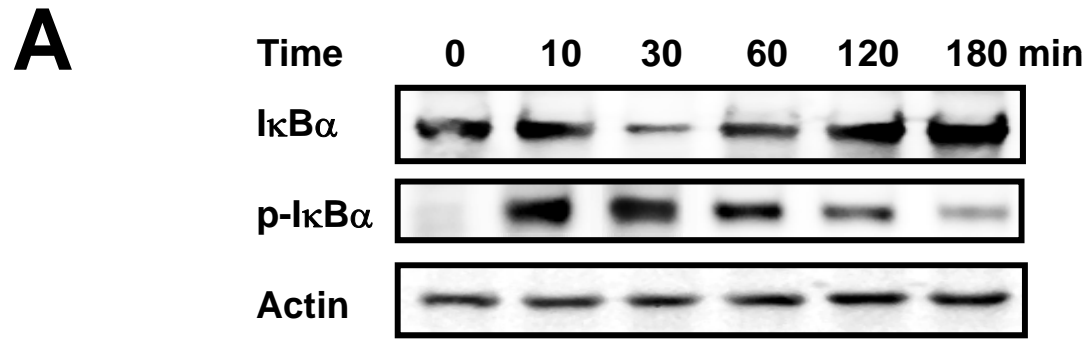


Figure 7

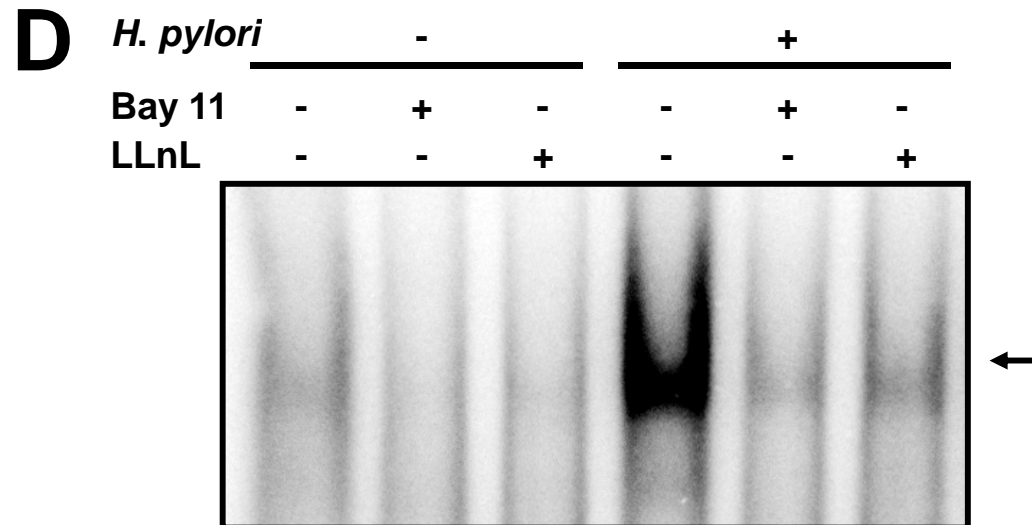
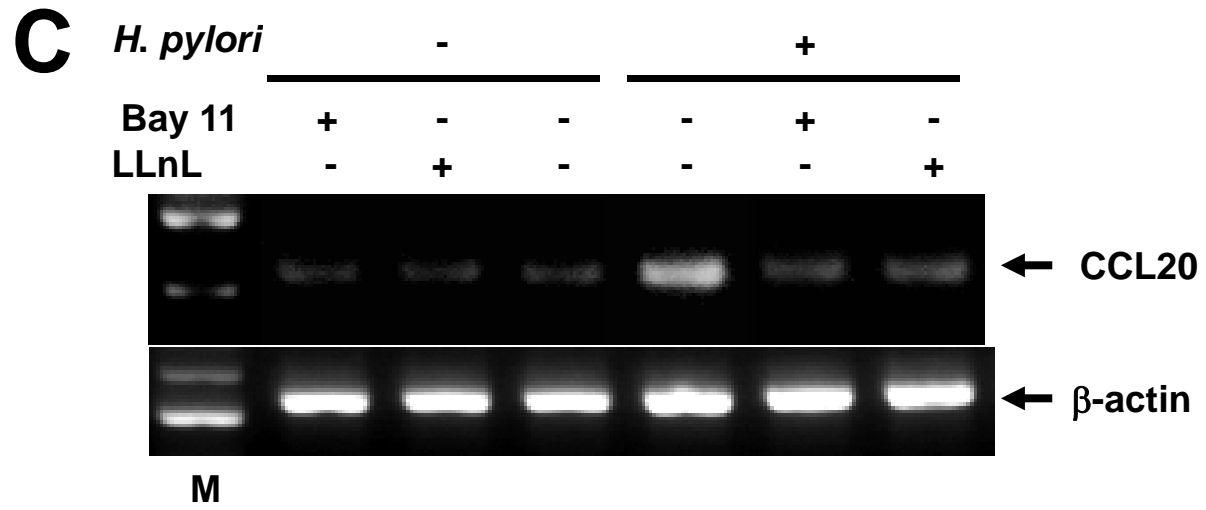
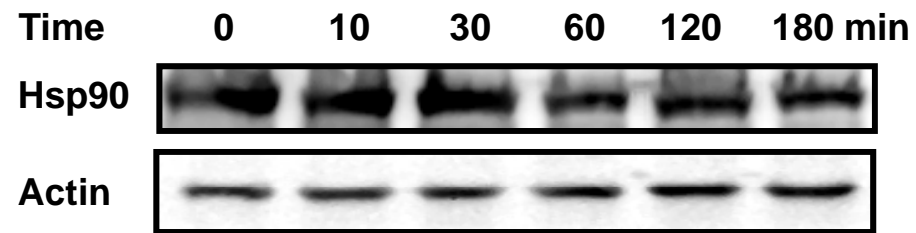
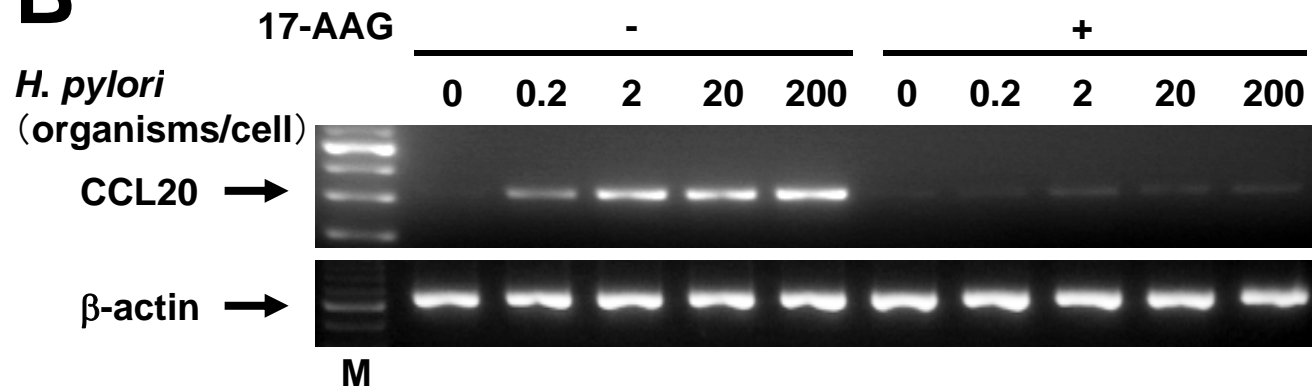
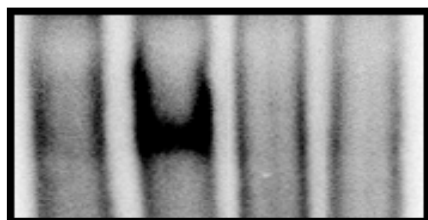


Figure 7

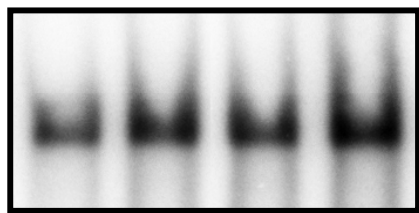
A**B****Figure 8**

C

<i>H. pylori</i>	-	+	-	+
17-AAG	-	-	+	+



Probe: CCL20 κB



Probe: Oct-1

D

LLnL	-	-	+	+
17-AAG	-	+	+	-

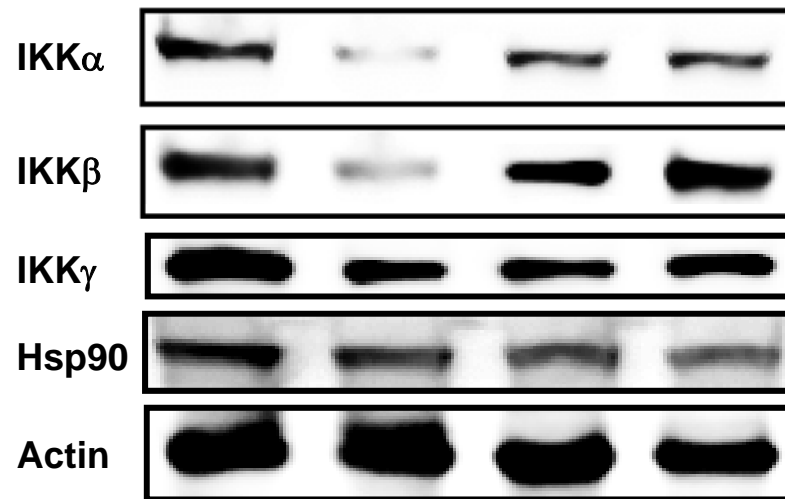


Figure 8