

## 琉球大学学術リポジトリ

Human T-cell leukemia virus type I infects human lung epithelial cells and induces gene expression of cytokines, chemokines and cell adhesion molecules

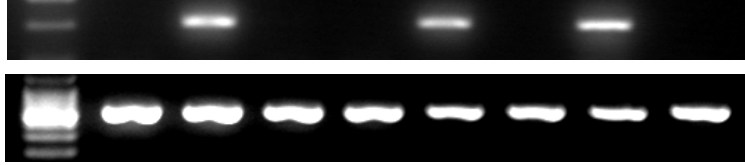
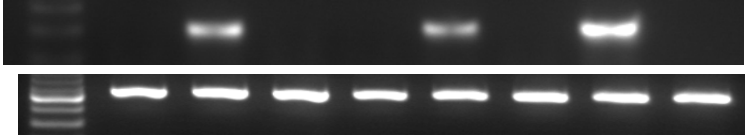
メタデータ	言語: 出版者: BioMed Central Ltd. 公開日: 2008-10-03 キーワード (Ja): キーワード (En): 作成者: Teruya, Hiromitsu, Tomita, Mariko, Senba, Masachika, Ishikawa, Chie, Tamayose, Maki, Miyazato, Akiko, Yara, Satomi, Tanaka, Yuetsu, Iwakura, Yoichiro, Fujita, Jiro, Mori, Naoki メールアドレス: 所属:
URL	<a href="http://hdl.handle.net/20.500.12000/7347">http://hdl.handle.net/20.500.12000/7347</a>

**A549**

**NCI-H292**

	Day 3			Day 5				
MT-2	-	+	-	-	+	-	MT-2	CCRF-CEM
CCRF-CEM	-	-	+	-	-	+		

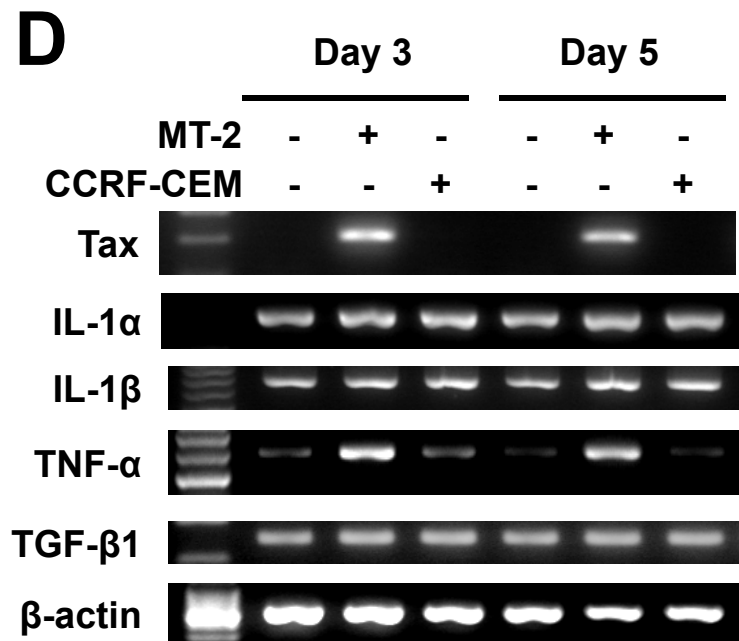
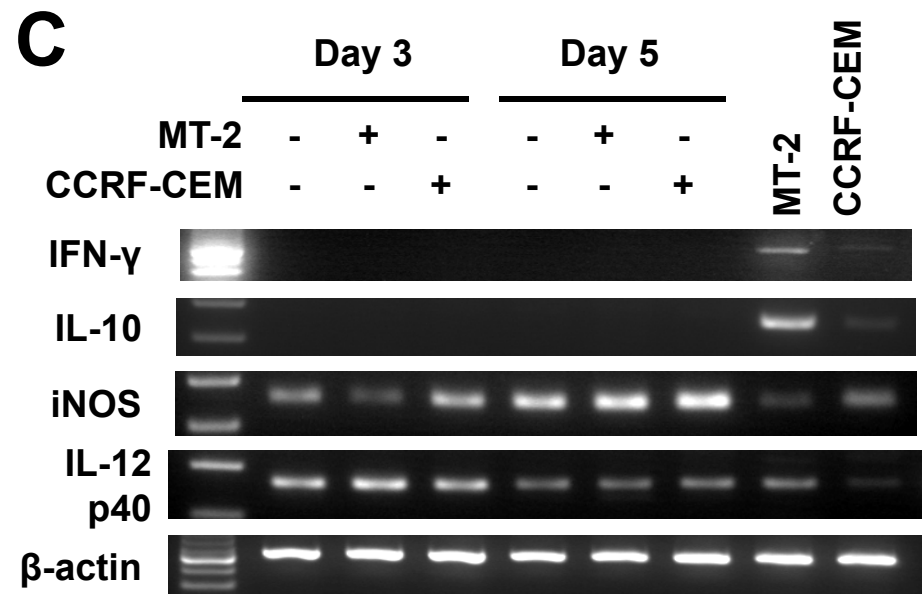
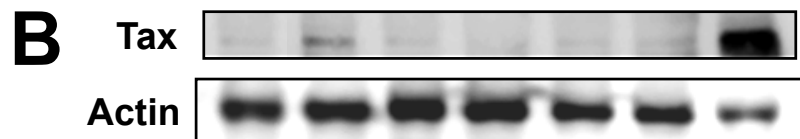
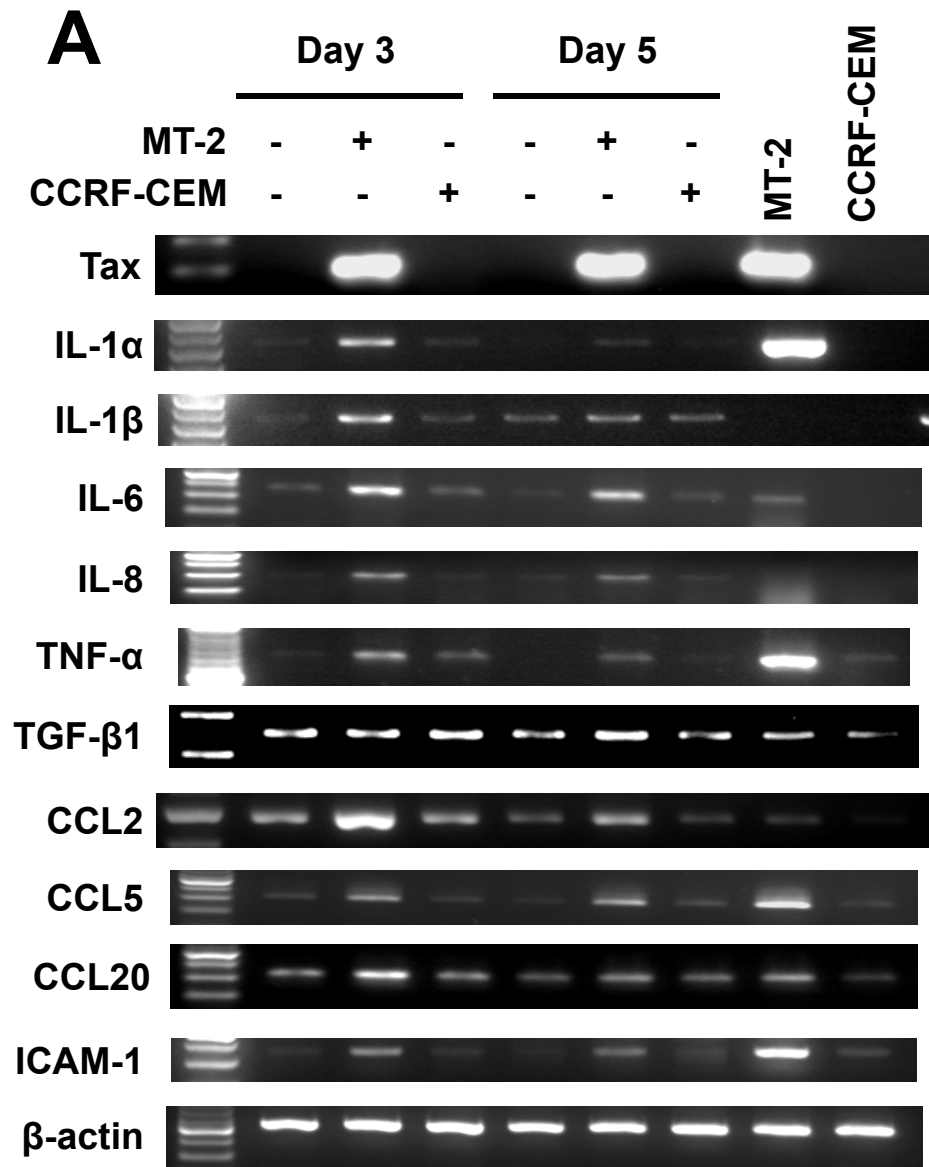
	Day 3			Day 5				
MT-2	-	+	-	-	+	-	MT-2	CCRF-CEM
CCRF-CEM	-	-	+	-	-	+		

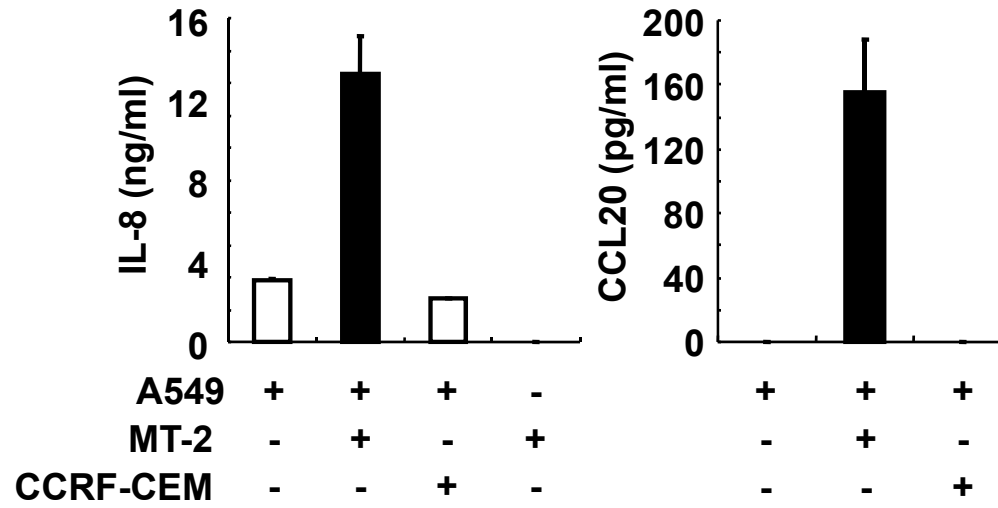
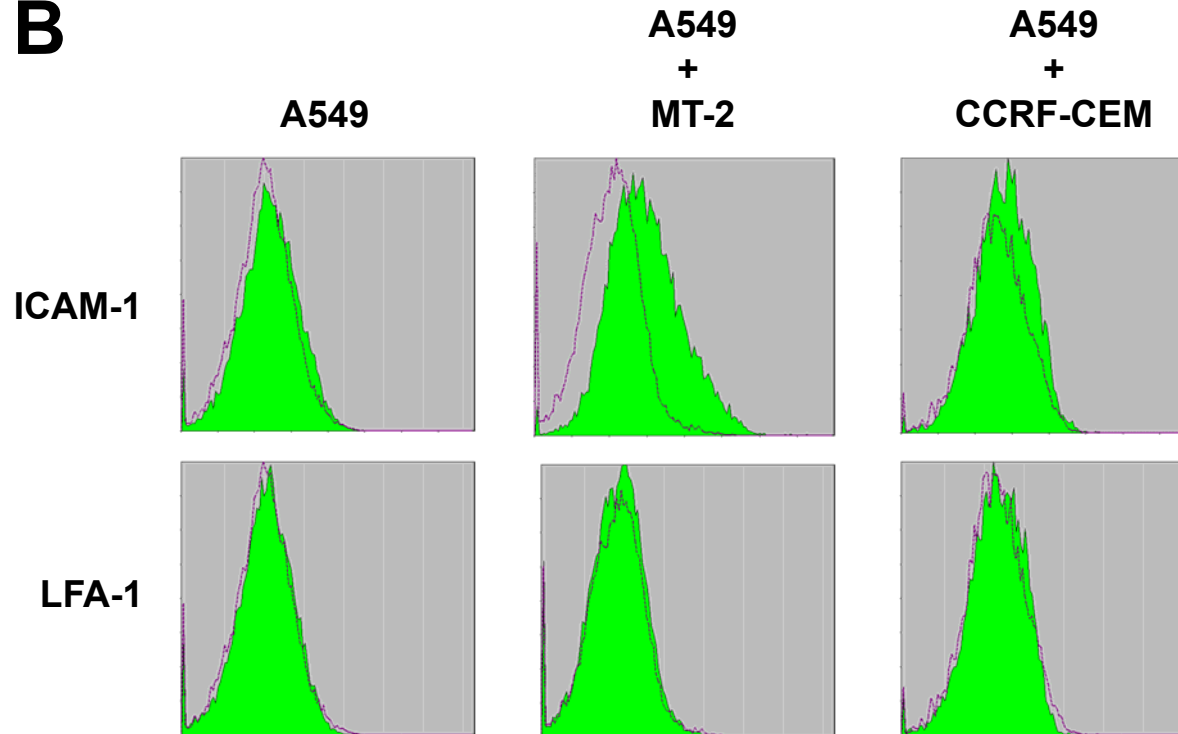


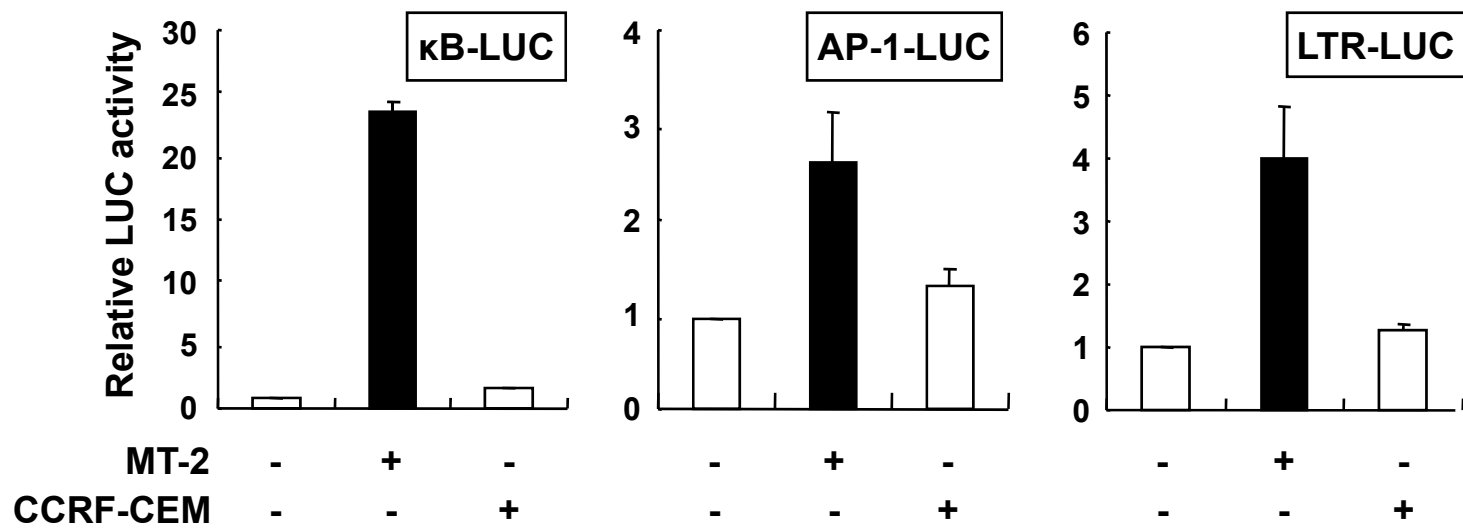
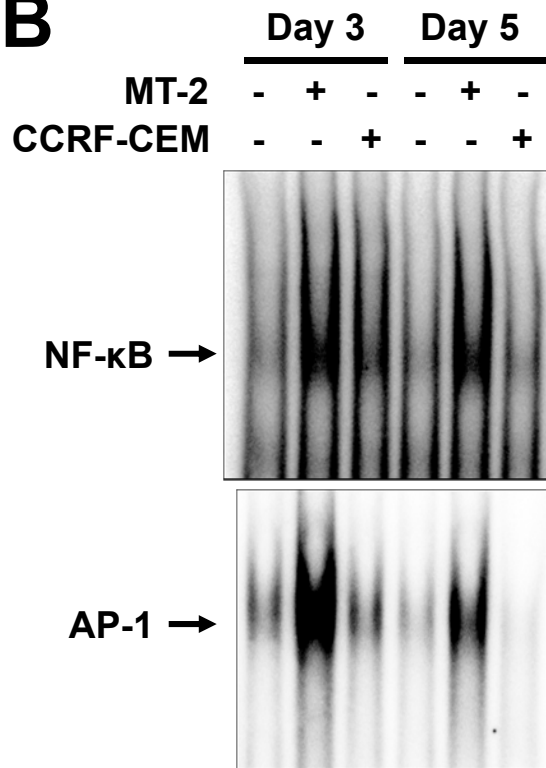
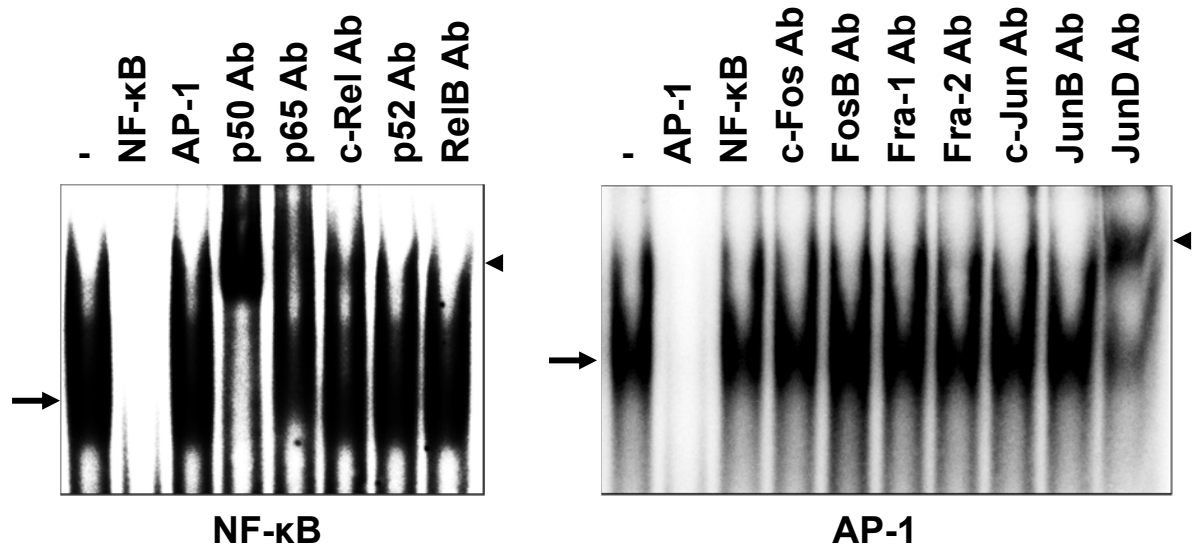
1 2 3 4 5 6 7 8

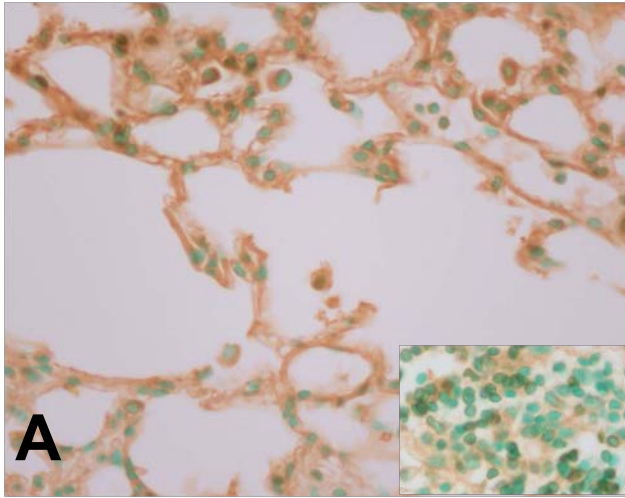
1 2 3 4 5 6 7 8

Tax  
β-actin

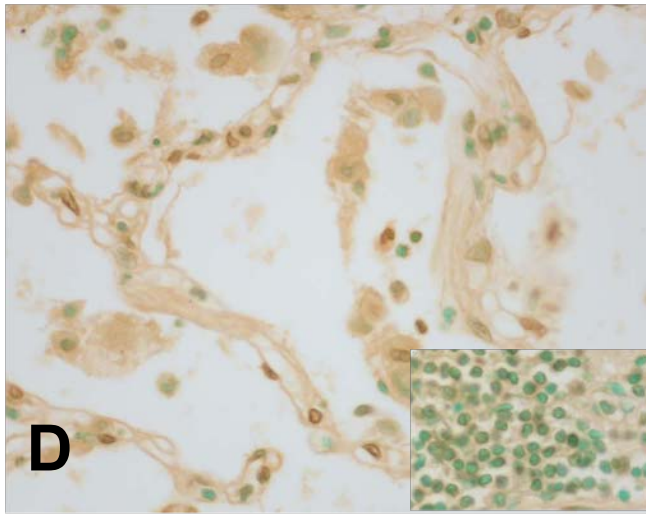
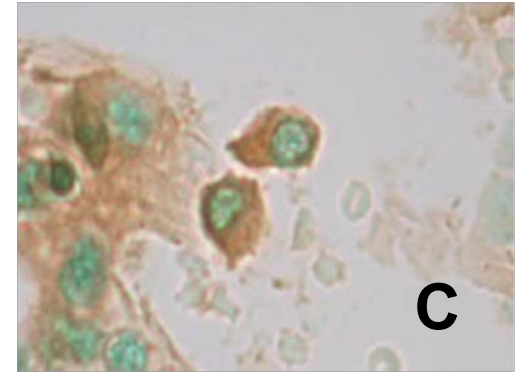
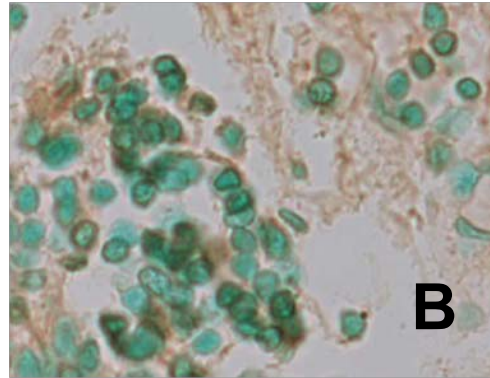


**A****B**

**A****B****C**



## Tax transgenic mice



## HTLV-I-related pulmonary diseases

