

琉球大学学術リポジトリ

Anti-adult T-cell leukemia/lymphoma effects of indole-3-carbinol

メタデータ	言語: 出版者: BioMed Central Ltd. 公開日: 2009-01-19 キーワード (Ja): キーワード (En): 作成者: Machijima, Yoshiaki, Ishikawa, Chie, Sawada, Shigeki, Okudaira, Taeko, Uchihara, Jun-nosuke, Tanaka, Yuetsu, Taira, Naoya, Mori, Naoki メールアドレス: 所属:
URL	http://hdl.handle.net/20.500.12000/8827

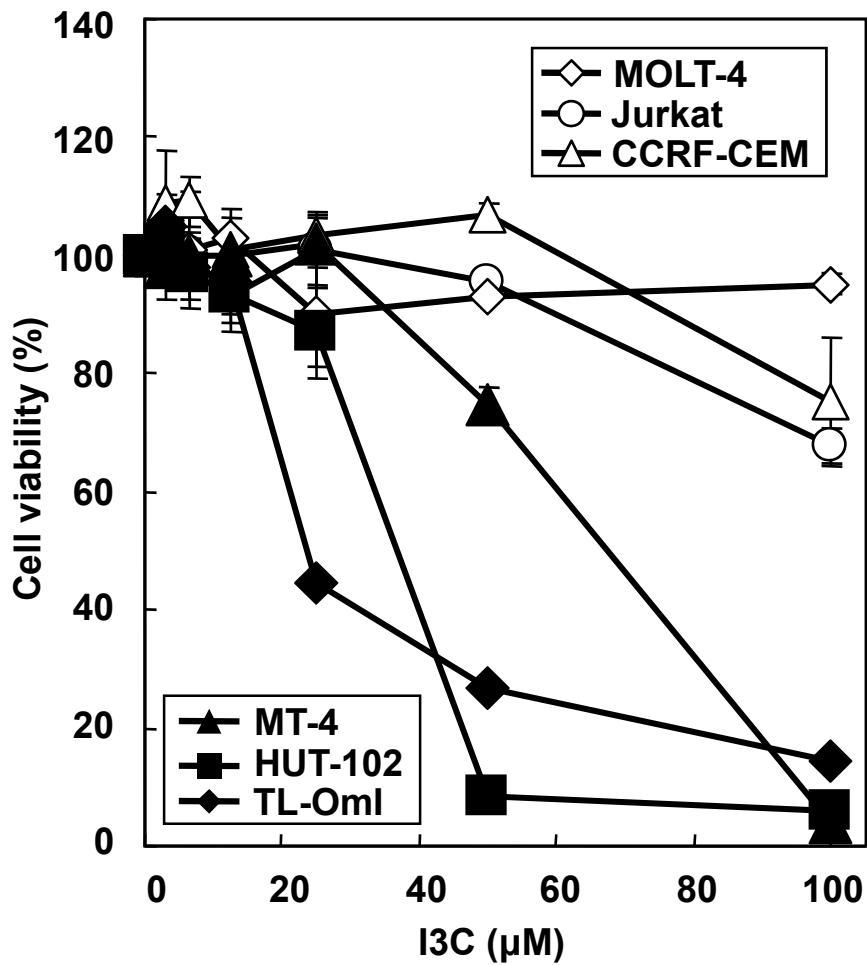
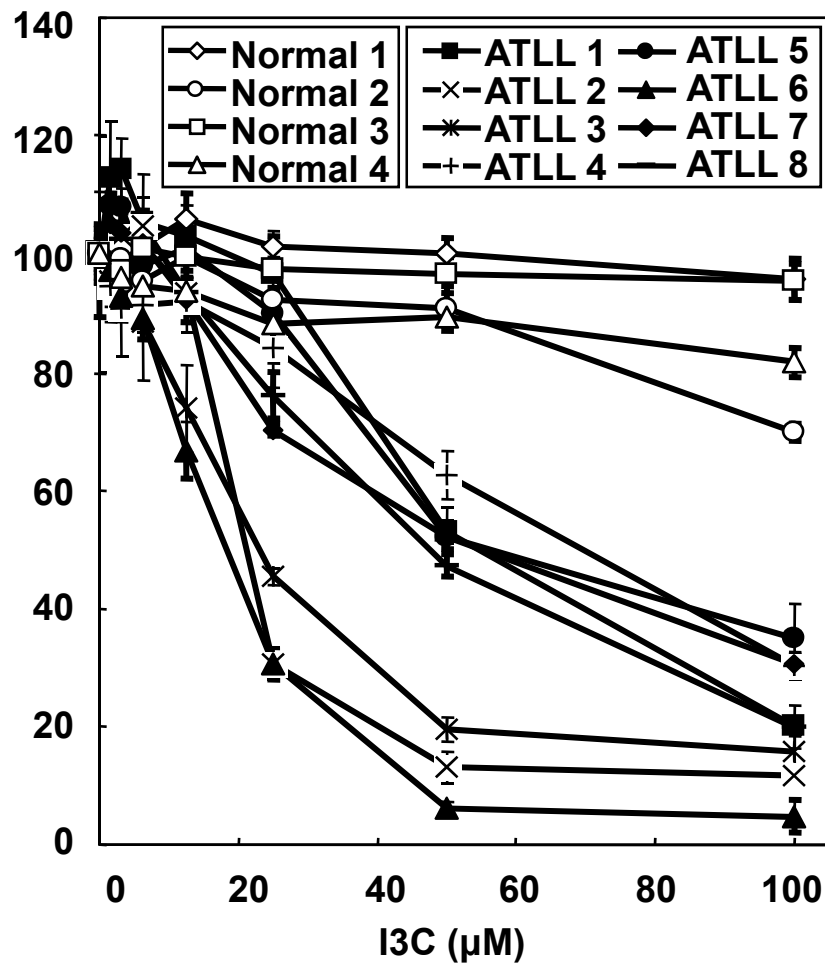
A**T-cell lines****B****PBMC**

Figure 1

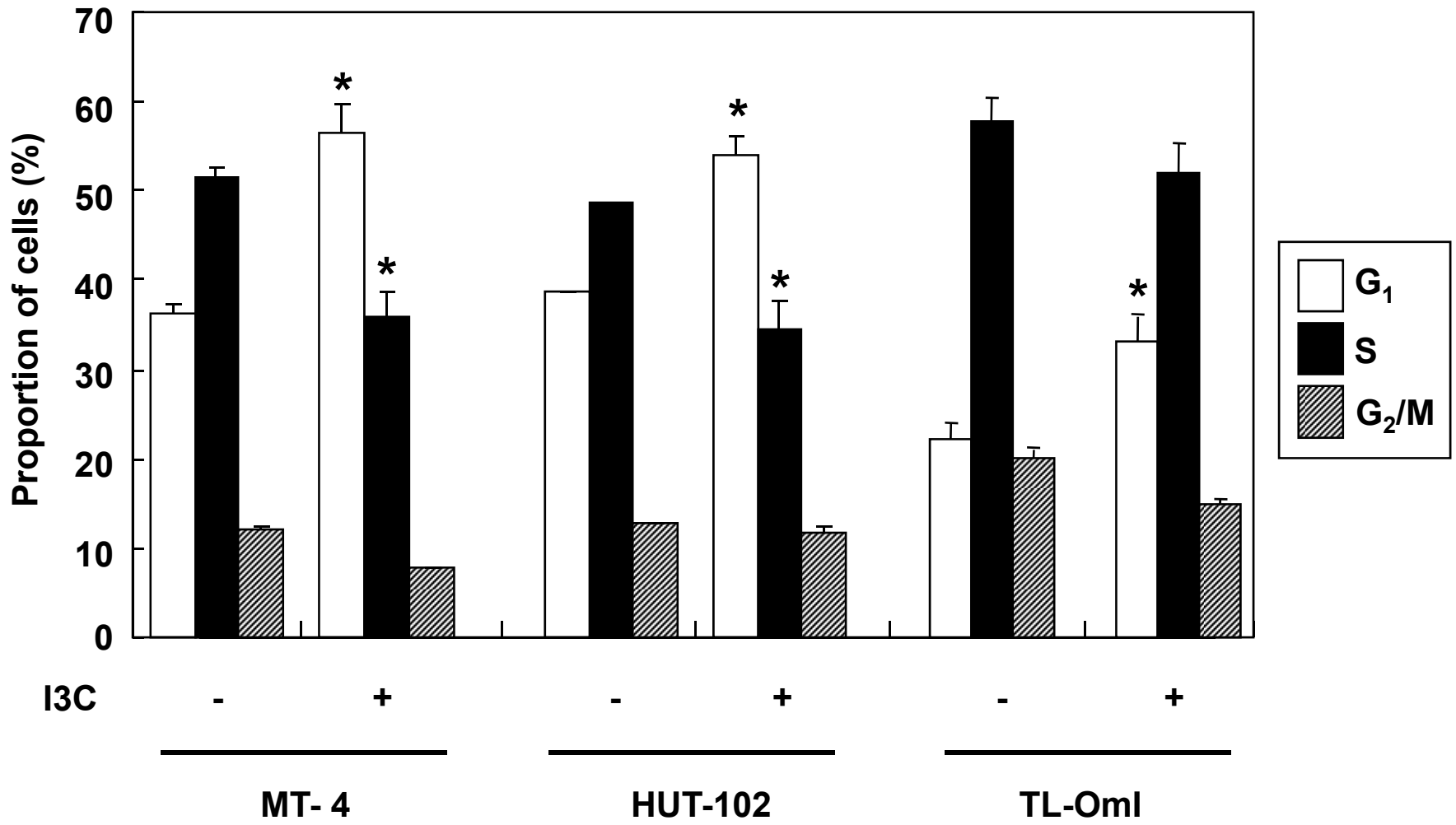


Figure 2

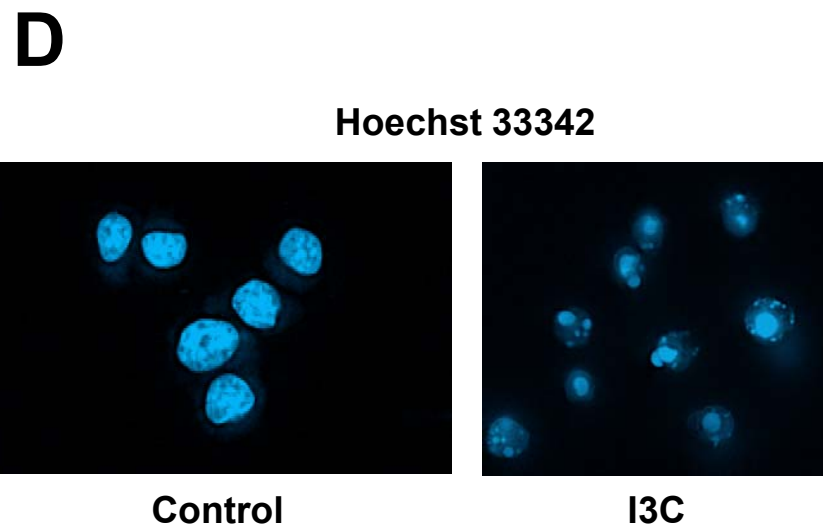
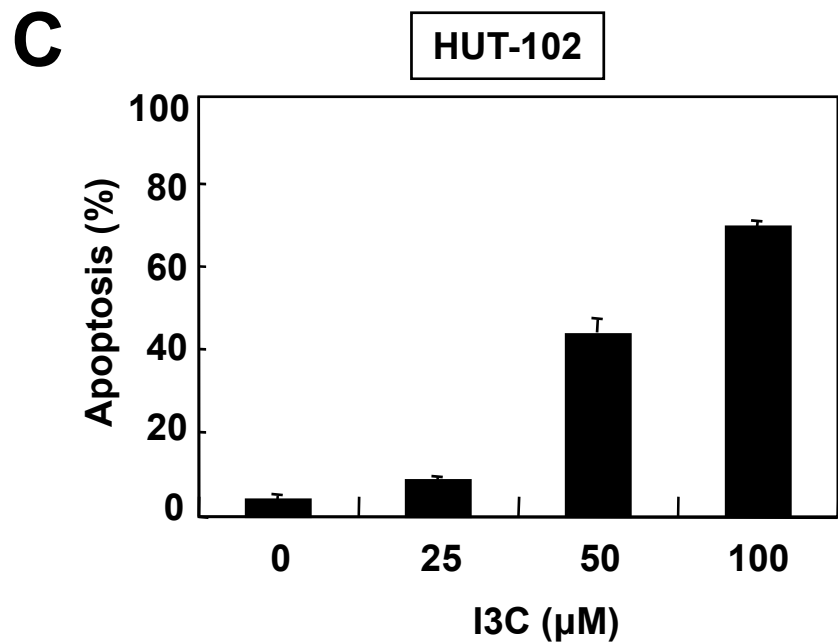
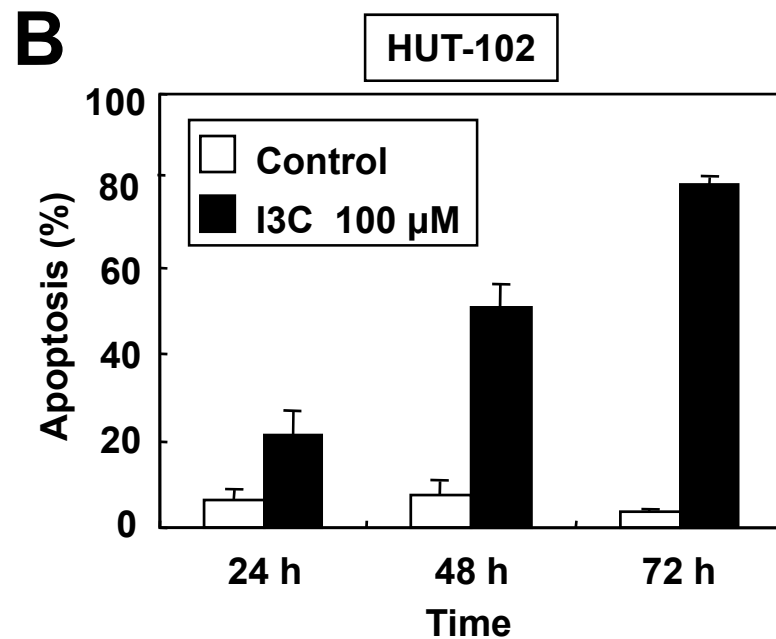
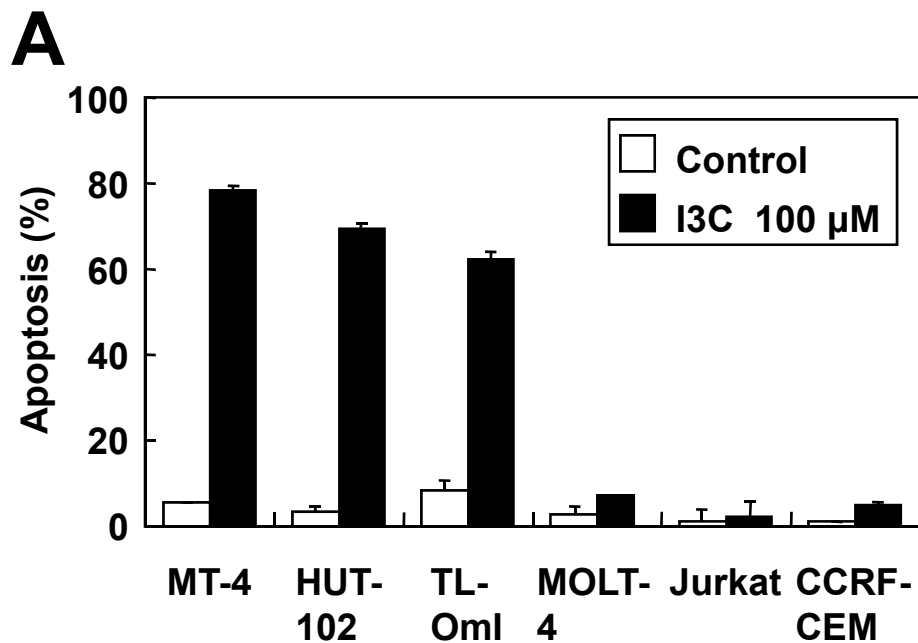


Figure 3

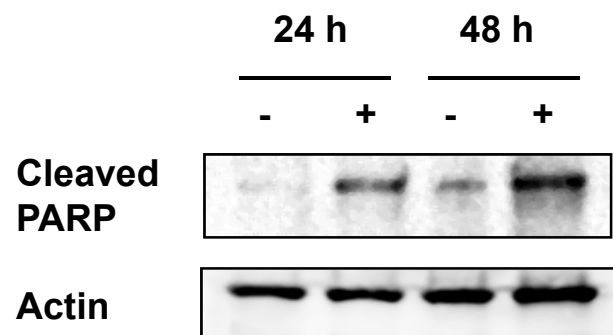
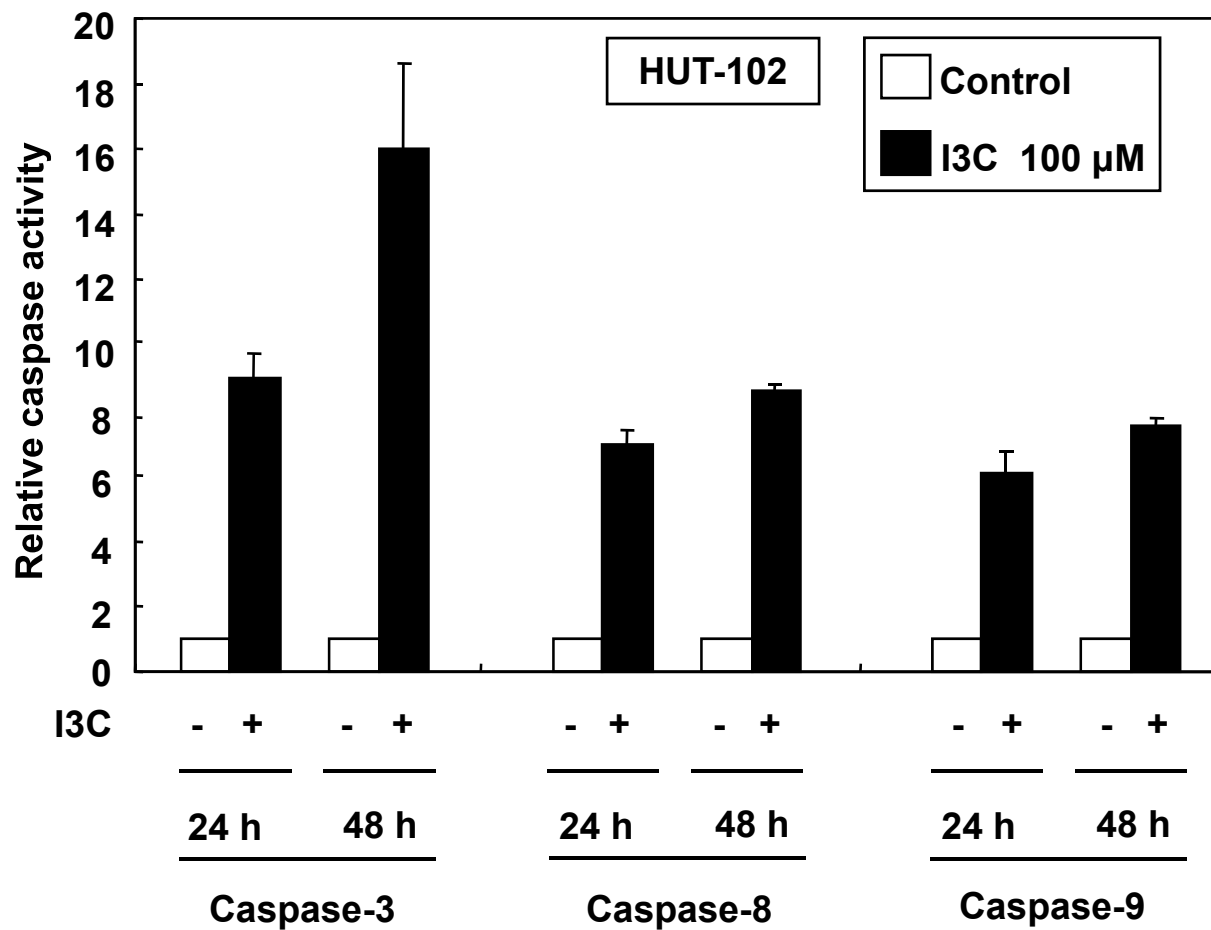
A**B**

Figure 4

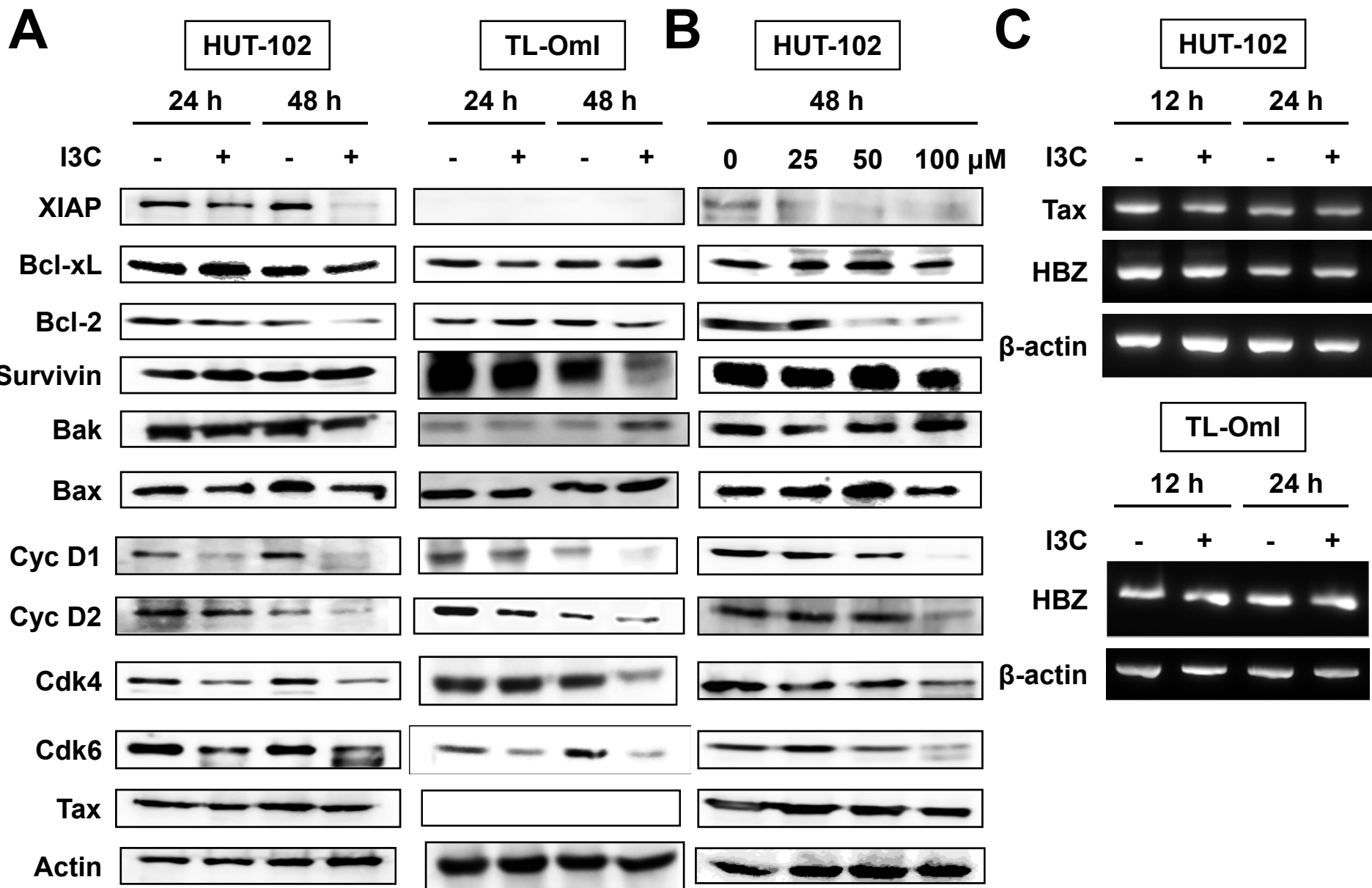


Figure 5

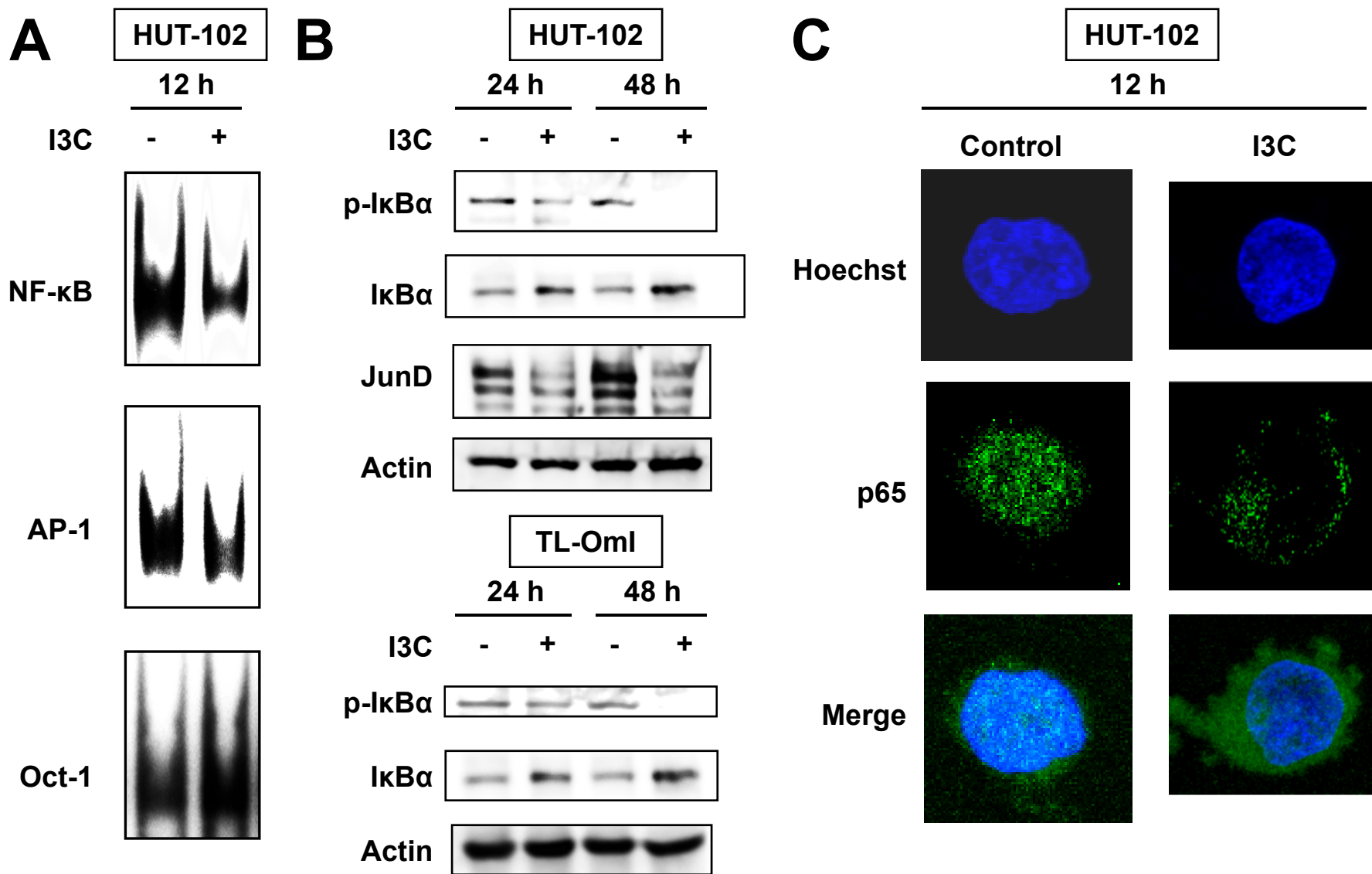


Figure 6

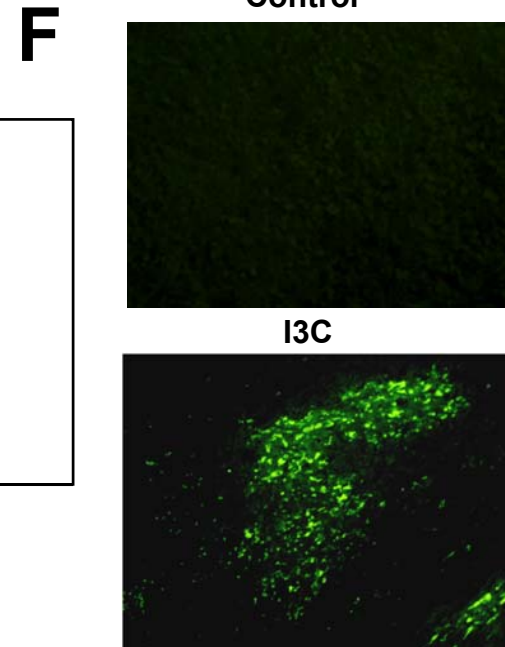
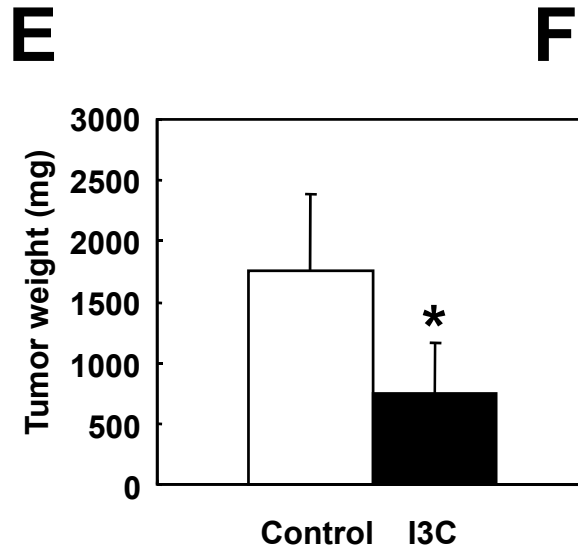
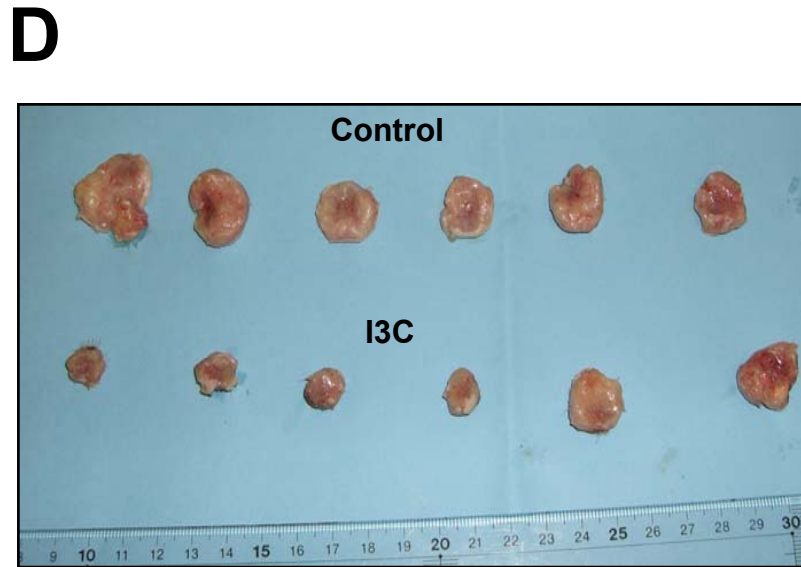
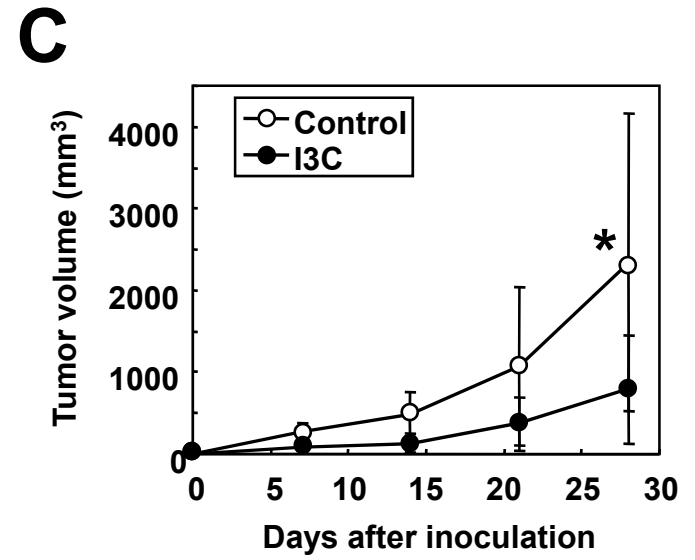
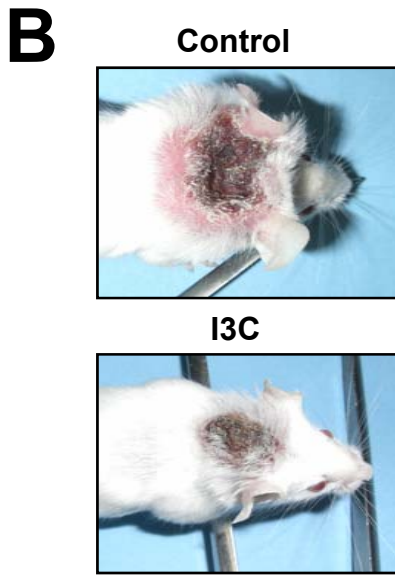
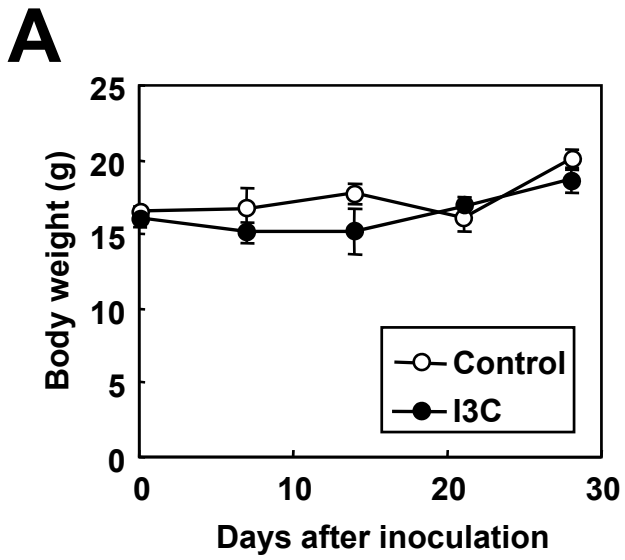


Figure 7