

琉球大学学術リポジトリ

琉球産異翅半翅類目録(追補2)

メタデータ	言語: 出版者: 琉球大学農家政工学部 公開日: 2012-02-15 キーワード (Ja): キーワード (En): 作成者: Takara, Tetsuo, Hidaka, Terunobu, 高良, 鉄夫, 日高, 輝展 メールアドレス: 所属:
URL	http://hdl.handle.net/20.500.12000/23271

Provisional List of *Hemiptera-Heteroptera* in the Ryukyu Islands. Supplemental Notes 2*

By

Tetsuo TAKARA** and Terunobu HIDAKA***

Introduction

In the present work, 10 genera and 16 species of *Heteroptera* are newly added to the fauna of the Ryukyus. The specimens recorded here are kept in the collection of the Entomological Laboratory, Kyushu University, Fukuoka and the University of the Ryukyus.

The authors would like to express their sincere thanks to Profs. K. Yasumatsu, S. Miyamoto, and Y. Hirashima of Kyushu University for their warm guidance in the course of the present study. Thanks are also extended to Dr. R. J. Izzard of the British Museum of Natural History and Mr. P. D. Ashlock of the University of California, for their kind help, and to Dr. J. L. Gressitt and Mr. Y. Miyatake of Bishop Museum, Honolulu, who kindly gave a chance to investigate the bug specimens collected by Dr. G. E. Bohart in the Ryukyus.

1. The Ryukyu Islands in the report include Okinawa, Miyako, and Yaeyama Islands which were previously referred to as Okinawa Prefecture.
2. Food in the report are those existing in the Ryukyu Islands.

Enumeration of species

Family Pentatomidae

166) *Eysarcoris aeneus* (Scopoli, 1763)

- 1763 *Cimex aeneus* Scopoli, Ent. Carn. 1763: 122.
1790 *Cimex furcatus* Rossi, Faun. Etr. 2: 235.
1794 *Cimex perlatus* Fabricius, Ent. Syst. 4: 125.
1833 *Eysarcoris perlatus* Hahn, Wanz. Ins. 1833: 67, fig.
1846 *Eusarcoris aeneus* Kolenati, Melet. Ent. 4: 156.
1852 *Pentatoma perlata* Grski, Anal. 1852: 79.
1860 *Eysarcoris perlatus* Uhler, Proc. Acad. Nat. Sci. Phil. 1860: 224.
1861 *Eusarcoris aeneus* Fieber, Europ. Hem. 1861: 332.
1892 *Eusarcoris aeneus* Saunders, Hem. Het. Br. 1892: 26, fig.
1906 *Eusarcoris aeneus* Oshanin, Verz. Paleark. Hem.: 95.

Food plant: Unknown.

No specimens examined.

Local distr.:

Foreign distr.: Europe, Amur.

Family Lygaeidae

119. Genus *Aethalotus* Stål, 1874

1874 *Aethalotus* Stål, Enum. Hem. 4: 98.

* Contribution Ser. 2, No. 108. Entomological Laboratory, Kyushu University.

** Agriculture, Home Economics and Engineering Division, University of the Ryukyus.

*** Entomological Laboratory, Faculty of Agriculture, Kyushu University, Fukuoka.

167) *Aethalotus nigriventris* Horváth, 1914

Jap. name: Maeaka-nagakamemushi

1914 *Aethalotus nigriventris* Horváth, Ann. Mus. Nat. Hung. 12: 632.1926 *Aethalotus nigriventris* Esaki, Ann. Mus. Nat. Hung. 24: 159.1932 *Aethalotus nigriventris* Esaki, Ico. Ins. Jap., 1618, fig.

Food: Unknown.

Specimens examined: Ishigaki-jima, Ryukyus, 20-30. xi. 1952, 4 males and 1 female and 1-5. i. 1953, 2 males and 1 female (G. E. Bohart leg.); 27. viii. 1958, 1 male and 1 female (T. Hidaka leg.); Miyako-jima, 28. x. 1952, 1 male (G. E. Bohart leg.).

Local distr.: Ishigaki-jima and Miyako-jima.

Foreign distr.: Formosa.

120. Genus *Ninomimus* Lindberg, 19341934 *Ninomimus* Lindberg, Notulae Ent. 14: 8.168) *Ninomimus assamensis* (Distant, 1901) (Fig. A, 3)

Jap. name: Assam-hosomedaka-nagakamemushi

1901 *Ninus assamensis* Distant, Ann. Mag. Nat. Hist. (7) 8: 465.1903 *Ninus assamensis* Distant, Fauna Brit. Ind. Rynch. 2: 20, fig.1921 *Cymoninus assamensis* Bergroth, Ann. Soc. Ent. Belg. 61: 168.1957 *Ninomimus assamensis* Scudder, Publ. Cult. Comp. Diam. Angola, 34: 107-108.

Food: Unknown.

Specimens examined: Yona, Okinawa, 16-18. viii. 1958, 2 ♂ (T. Hidaka leg.).

Local distr.: Okinawa-jima.

Foreign distr.: India, Assam, Burma.

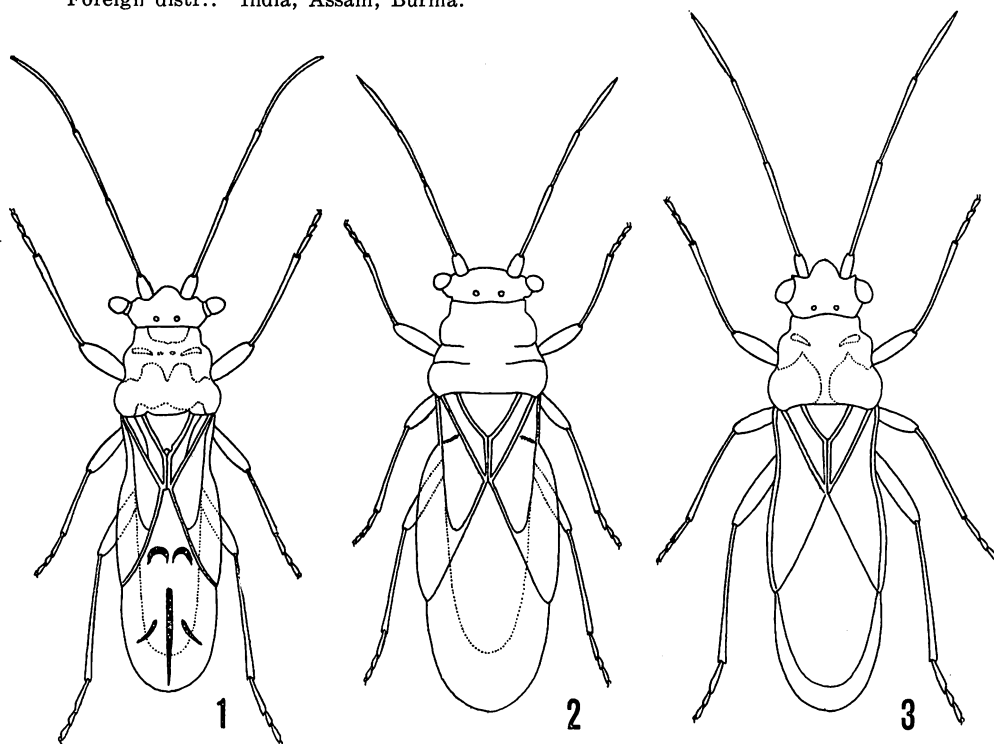


Fig. A. 1. *Ninus insignis* Stål. 2. *Cymoninus turaensis* (Paiva).
3. *Ninomimus assamensis* (Distant).

121. Genus *Cymoninus* Breddin, 19071907 *Cymoninus* Breddin, Deut. Ent. Zeit. 1907: 38.169) *Cymoninus turaensis* (Paiva, 1919) (Fig. A, 2)

Jap. name: Tura-hosomedaka-nagakamemushi

1919 *Ninus turaensis* Paiva, Rec. Ind. Mus. 16: 359.1957 *Cymoninus turaensis* Scudder, Publ. Cult. Comp. Diam. Angola, 34: 104-105, fig.

Food: Unknown.

Specimens examined: Nago, Okinawa, 16. viii. 1958, 1 female (T. Hidaka leg.); Yona, Okinawa, 16-18. viii. 1958, 2 females (T. Takara and T. Hidaka Leg.); Ishigaki-jima, 28-29. viii. 1958, 2 females (T. Hidaka leg.).

Local distr.: Okinawa-jima, Ishigaki-jima.

Foreign distr.: India, Ceylon, Malaya.

122. Genus *Ninus* Stål, 18571857 *Ninus* Stål, Freg. Eug. Resa. Ins. Hem.: 252.170) *Ninus insignis* Stål, 1859 (Fig. A, 1)

Jap. name:

1859 *Ninus insignis* Stål, Freg. Eug. Resa. Ins. Hem.: 253, fig.1907 *Ninus sirgalensis* Breddin, Deut. Ent. Zeit. 1907: 39.1908 *Ninus stylatus* Kirkaldy, Proc. Linn. Soc. N. S. W. 33: 356.1910 *Ninus singalensis* Distant, Fauna Brit. Ind. Rhyn. 5: 15.1918 *Ossipaga ceylonica* Distant, Fauna Brit. Ind. Rhyn. 7: 185, fig.1918 *Ninus insignis* Bergroth, Philip. J. Sci. D. 13(2): 63.1921 *Ninus insignis* Bergroth, Ann. Soc. Ent. Belg. 61: 166.1957 *Ninus insignis* Scudder, Publ. Cult. Comp. Diam. Angola, 34: 98.

Food: Unknown.

Specimens examined: Ishigaki-jima, 25-30. xi. 1952, 1 ♀ (G. E. Bohart leg.) and 28-29. viii. 1958, 1 ♂ 1 ♀ (T. Hidaka and T. Takara leg.).

123. Genus *Geocoris* Fallen, 18141814 *Geocoris* Fallen, Spec. Hem. Disp., 1814: 10.171) *Geocoris jucundus* (Fieber, 1861)

Jap. name: Chibi-ôme-kamemushi

1861 *Ophthalmicus jucundus* Fieber, Wien. Ent. Zeit. 5: 270.1904 *Geocoris jucundus* Distant, Fauna Brit. Ind. Rhyn. 2: 31.1910 *Geocoris jucundus* Distant, Fauna Brit. Ind. Rhyn. 5: 28.Food: *Aphis* sp., *Coccus* sp.

Specimens examined: Ishigaki city, Ishigaki-jima, 28-29. viii. 1958, 1 ♀ (T. Hidaka leg.).

Local distr.: Ishigaki-jima.

Foreign distr.: India, Burma, Ceylon.

172) *Pachygrontha austrina* Kirkaldy, 1908

Jap. name: Kirkaldy-higenagakamemushi.

1908 *Pachygrontha austrina* Kirkaldy, Proc. Linn. Soc. New South Wales 32: 771.1955 *Pachygrontha austrina* Slater, Philip. J. Sci. 84: 61-62.

Food: Unknown.

Specimens examined: Banna-dake, Ishigaki-jima, 26. viii. 1958, 1 ♀ (T. Hidaka leg.).

Local distr.: Ishigaki-jima.

Foreign distr.: Australia, Dutch New Guinea, Philippines, Formosa.

124. Genus *Pachyphlegyas* Slater, 19551955 *Pachyphlegyas* Slater, Philip. J. Sci. 84: 133.

173) *Pachyphlegyas modigliani modigliani* (Lethierry, 1888) (Fig. B)

Jap. name: Semaru-nagakamemushi

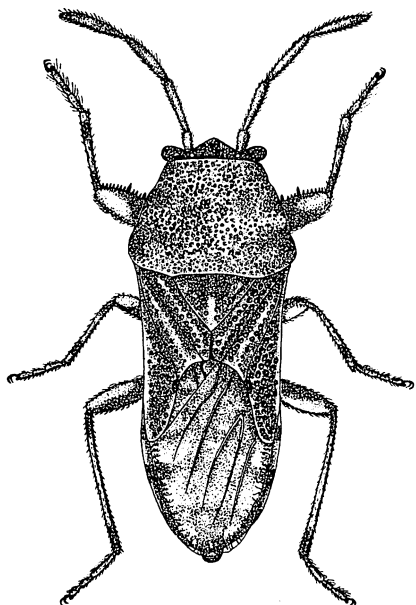
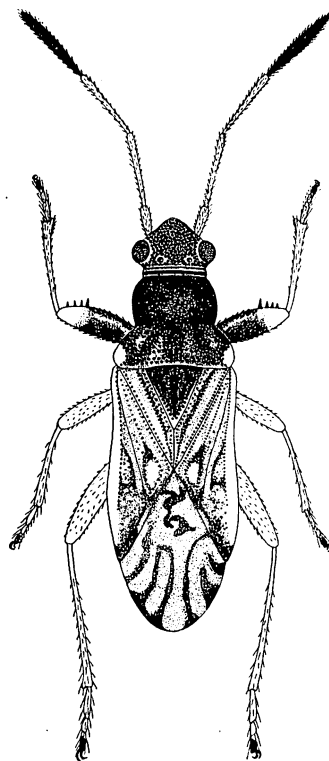
1888 *Helonotocoris modigliani* Lethierry, Ann. Mus. Civico Storia Nat. Genova 6: 463.1894 *Phlegyas modigliani* Lethierry et Sev. Gen. Cat. Hem. 2: 179.1907 *Teracrius modigliani* Breddin, Deut. Ent. Zeit. 1907: 219.1918 *Teracrius bipunctatus* Bergroth, Philip. J. Sci. 13: 71.1955 *Pachyphlegyas modigliani modigliani* Slater, Philip. J. Sci. 84: 134-136.1958 *Pachyphlegyas modigliani modigliani* Hidaka, Akitsu 7: 25-27.

Food: Unknown.

Specimens examined: Ishigaki I., 10-15. xii. 1952, 2 ♂ 2 ♀ (G. E. Bohart leg.).

Local distr.: Ishigaki-jima.

Foreign distr.: Philippines, India, Sumatra, Formosa.

Fig. B. *Pachyphlegyas modigliani modigliani* (Lethierry)Fig. C. *Pachybrachius izzardii* Hidaka174) *Pachybrachius izzardii* Hidaka, 1958 (Fig. C)

Jap. name: Izzard-hyôtan-nagakamemushi

1958 *Pachybrachius izzardii* Hidaka, Ins. Matsumurana 22: 37-39.1960 *Pachybrachius izzardii* Miyamoto et Hidaka, Kontyû 28: 46.

Food: Unknown.

Specimens examined: Izumi, Okinawa, 15. viii. 1958, 11 ♂ 10 ♀ (T. Hidaka leg.); Nago, Okinawa, 16. viii. 1958, 16 ♂ 11 ♀ (T. Takara and T. Hidaka leg.); Yona, Okinawa, 16-18. viii. 1958, 8 ♂ 8 ♀ (T. Hidaka leg.); Shuri, Okinawa, 19-21. viii. 1958, 3 ♂ 5 ♀ (T. Hidaka and T. Takara leg.); Chizuka, Okinawa, 2. ix. 1945, 1 ♀ (J. L. Gressitt leg.); Shimoji,

Miyako-jima, 5, ix. 1958, 1 ♀ (T. Hidaka leg.); Shimozato, Miyako-jima, 22. viii. 1958, 2 ♂ 1 ♀ (T. Hidaka leg.); Hirara, Miyako, 23. x. 1952, 1 ♂ 3 ♀ (G. E. Bohart leg.); Bannadake, Ishigaki Is., 24. vi. 1934, 1 ♀ (T. Esaki leg.) and 26. viii. 1958, 2 nymphs, 1 ♀ (T. Takara leg.), Yonehara-Hoshino, Ishigaki-jima, 27. viii. 1958, 1 ♀ (T. Takara and T. Hidaka leg.); Ôhama, Ishigaki-jima, 23. viii. 1958, 3 ♂ 1 ♀ (T. Hidaka leg.); Ishigaki I., 10-15. xii. 1952, 1 ♀ (G. E. Bohart leg.).

Local distr.: Okinawa-jima, Miyako-jima, Ishigaki-jima.

175) *Pachybrachius sobrinus* (Distant, 1901)

Jap. name: Kiïro-hyotan-nagakamemushi

1901 *Pamera sobrina* Distant, Ann. Mag. Nat. Hist. (7)8: 480.

1904 *Pamera sobrina* Distant, Fauna Brit. Ind. Rhyn. 2: 55.

Food: Unknown.

Specimens examined: Yona, Okinawa, 16-18. viii. 1958, 1 ♀ (T. Takara and T. Hidaka leg.); Yonehara-Hoshino, Ishigaki-jima, 27. viii. 1958, 1 ♂ (T. Hidaka leg.); Ishigaki I., 20-30. xi. 1952, 1 ♂ 1 ♀ (G. E. Bohart leg.) and 10-15. xii. 1952, 3 ♀ (G. E. Bohart leg.).

Local distr.: Okinawa-jima, Ishigaki-jima.

Foreign distr.: India, Ceylon, Burma.

176) *Pachybrachius chinai* Usinger, 1946

Jap. name: China-hyotan-nagakamemushi

1946 *Pachybrachius chinai* Usinger, Bull. B. P. Bishop Mus. 189: 30.

1958 *Pachybrachius chinai* Barber, Ins. Micronesia, 7: 202-203.

Food: Unknown.

Specimens examined: Shuri, Okinawa, 19-20. viii. 1958, 2 ♀ (T. Hidaka leg.); Miyako I., xi-xii. 1952, 1 ♂ (G. E. Bohart leg.); Ishigaki I., 20-30. xi. 1952, 11 ♂ 13 ♀ and 10-15. xii. 1952, 3 ♀ 2 ♂ (G. E. Bohart leg.); Ôhara, Iriomote-jima, 24-25. viii. 1958, 1 ♂ (T. Hidaka leg.).

Local distr.: Okinawa-jima, Miyako-jima, Ishigaki-jima, Iriomote-jima.

Foreign distr.: Micronesia.

177) *Pachybrachius octonotatus* (Bergroth, 1914)

Jap. name: Bergroth-hyotan-nagakamemushi

1914 *Pamera octonotata* Bergroth, Ent. Mitt. 3: 357.

1926 *Pamera octonotata* Esaki, Ann. Mus. Nat. Hung. 24: 162.

Food: Unknown.

Specimens examined: Ishigaki I. 20-30. xi. 1952, 1 ♂ (G. E. Bohart leg.).

Local distr.: Ishigaki-jima.

Foreign distr.: Formosa.

125. Genus *Lasiosomus* Fieber, 1861

1861 *Lasiosomus* Fieber, Europ. Hem. 1861: 185.

178) *Lasiosomus pallipes* Scott, 1874

Jap. name: Hime-tsuya-nagakamemushi

1874 *Lasiosomus pallipes* Scott, Ann. Mag. Nat. Hist. 1874: 25.

1883 *Lasiosomus pallipes* Distant, Trans. Ent. Soc. Lond. 1883: 417.

1894 *Lasiosomus pallipes* Lethierry et Sev., Gen. Cat. Hem. 2: 207.

1906 *Lasiosomus pallipes* Oshanin, Verz. Paleark. Hem. 1: 332.

Food: Unknown.

Specimens examined: Chizuka, Okinawa, 2. ix. 1945, 1 ♀ (J. L. Gressitt leg.); Bannadake, Ishigaki-jima, 26. viii. 1958, 1 ♀ (T. Hidaka and T. Takara leg.).

Local distr.: Okinawa, Ishigaki-jima.

Foreign distr.: Japan.

126. Genus *Abdolominus* Distant, 1904
 1904 *Abdolominus* Distant, Fauna Brit. Ind. Rhyn. 2: 90.
 179) *Abdolominus intaminatus* Distant, 1904
 Jap. name: Ô-tsuya-nagakamemushi
- 1904 *Abdolominus intaminatus* Distant, Fauna Brit. Ind. Rhyn. 2: 91.
 Food: Unknown.
 Specimen examined: Ishigaki I., 10-15. xii. 1952, 1 ♀ (G. E. Bohart leg.).
 Local distr.: Ishigaki-jima.
 Foreign distr.: Burma, Formosa.

Family Aradidae

127. Genus *Aneurus* Curtis, 1825
 1825 *Aneurus* Curtis, Brit. Ent. 2: 86.
 180) *Aneurus greeni* Distant, 1905
 Jap. name:
- 1905 *Aneurus greeni* Distant, Entomologist, 38: 194.
 1910 *Aneurus greeni* Distant, Fauna Brit. Ind. Rhyn. 5: 131.
 1959 *Aneurus greeni* Usinger and Matsuda, Classification of the Aradidae (Hem.-Het.),
 London: 100.
 Food plant: *Distylium racemosum* Sieb. et Zucc. (Hamamelidaceae)
 Jap. name: Isunoki.
 Specimens examined: Funaura, Iriomote-jima, 16. iv. 1961, 7 ♂ 5 ♀ (T. Takara leg.).
 Local distr.: Iriomote-jima.
 Foreign distr.: Ceylon, Formosa.
128. Genus *Neuroctenus* Fieber, 1861
 1861 *Neuroctenus* Fieber, Eur. Hem. 1861: 34.
 181) *Neuroctenus pacificus* Usinger, 1946
 Jap. name:
- 1946 *Neuroctenus pacificus* Usinger, Bull. B. P. Bishop Mus. 189: 34-39, fig.
 1959 *Neuroctenus pacificus* Usinger and Matsuda, Classification of the Aradidae (Hem.-Het.),
 London: 273.
 Food plant: *Machilus Thunbergii* Sieb. et Zucc. (Lauraceae)
 Jap. name: Tabunoki.
 Specimens examined: Shirahama, Iriomote-jima, 18. iv. 1961, 4 ♂ 5 ♀ (T. Takara leg.).
 Local distr.: Iriomote-jima.
 Foreign distr.: Micronesia.

Literature cited

122. Uhler, P. R. (1860): Hemiptera of the North Pacific Exploring Expedition under Com'rs Rodgers and Ringgold. Proc. Acad. Nat. Sci. Philadelphia, 1860: 221-231.