

# 琉球大学学術リポジトリ

## 琉球産異翅半翅類目録（追補1）

メタデータ	言語: English 出版者: 琉球大学農家政工学部 公開日: 2012-08-06 キーワード (Ja): キーワード (En): 作成者: Takara, Tetsuo, Hidaka, Terunobu, 高良, 鉄夫, 日高, 輝展 メールアドレス: 所属:
URL	<a href="http://hdl.handle.net/20.500.12000/25039">http://hdl.handle.net/20.500.12000/25039</a>

# Provisional List of Hemiptera-Heteroptera in the Ryukyu Islands. Supplemental Notes 1\*

By

Tetsuo TAKARA\*\* and Terunobu HIDAKA\*\*\*

## Introduction

In 1957, one of the authors (T. Takara) published a list of the Heteropterous bugs from the Ryukyus (Science Bulletin of the Agriculture and Home Economics Division, University of the Ryukyus, no. 4). In the list Takara enumerated 18 families and 153 species of *Heteroptera* which were collected or recorded by many entomologists, i.e. S. Asahina (1932), T. Esaki (1934-1935), and T. Shiraki (1955), etc. but some of the Heteropterous bugs have remained untouched owing to the difficulty of identifying the names and the shortage of references concerning *Heteroptera* of the Ryukyus.

Fortunately the authors had a good chance to investigate the Heteropterous fauna of the Ryukyu Islands in 1958, and were able to get some knowledge on the bugs of that area.

In the present work, 11 genera and 12 species of *Heteroptera* are newly added to the fauna of the Ryukyus. The specimens recorded here are kept in the collection of the Entomological Laboratory, Kyushu University and the University of the Ryukyus.

The authors wish to express their hearty thanks to Profs. K. Yasumatsu, S. Miyamoto, and Y. Hirashima, of Kyushu University for their warm guidance in course of the present study. Thanks are also extended to Dr. R. J. Izzard, of the British Museum of Natural History, who kindly compared the bug specimens of Japan with the type specimens and gave them many informations concerning *Heteroptera* of the Asiatic areas.

1. The Ryukyu Islands in the report include Okinawa, Miyako, and Yaeyama Islands which were previously referred to as Okinawa Prefecture.
2. Food in the report are those existing in the Ryukyu Islands.

---

\* Contribution Ser. 2, No. 63. Entomological Laboratory, Kyushu University.

\*\* Agriculture, Home Economics and Engineering Division, University of the Ryukyus.

\*\*\* Entomological Laboratory, Faculty of Agriculture, Kyushu University.

## Enumeration of species

### Family Cydnidae

#### 154. *Macroscythus expansus* Signoret, 1882 (Fig. 1)

Jap. name: Ryukyu-tsuchikamemushi

1882 *Macroscythus expansus* Signoret, Ann. Soc. Ent. Fr. 6 (2): 479, t. 14, f. 138.

1902 *Macroscythus expansus* Distant, Fauna Brit. India, Rhynchota, 1:97.

Food plant: Unknown.

Specimens examined: Miyakojima: 15 Exs., xi. 1932 (H. Oshima); Ishigakijima: 1 Ex., 10. x. 1933 (N. Senaha).

Local distr.: Miyakojima and Ishigakijima.

Foreign distr.: Japan, India.

The present species distinctly differs from *Macroscythus subaeneus* Dallas from Japan, Ryukyu Islands, and India in having the following characters. Body small; head with rugose punctures and setae arranged near the anterior margin (Fig. 1. A); the second antennal segments the narrowest, but the third to fourth thick and swollen (Fig. 1. C); areas around the openings of the scent glands finely reticulated, metapleura with irregularly scattered punctures longitudinally (Fig. 1. B).

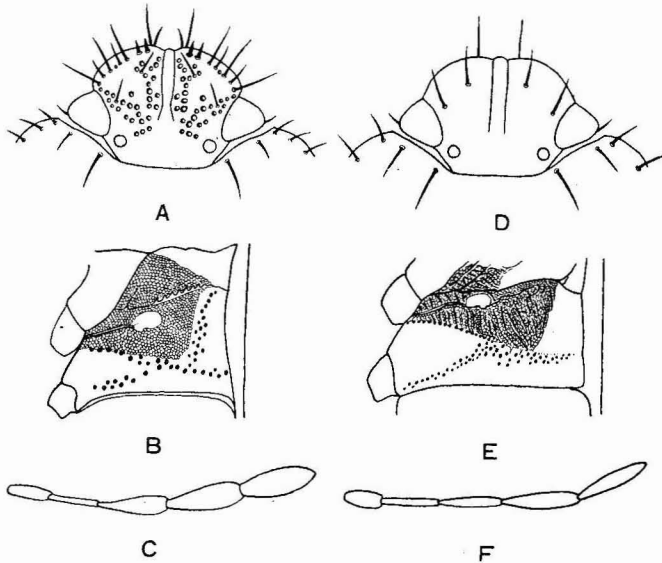


Fig. 1. A-C: *Macroscythus expansus* Signoret.

D-F: *Macroscythus subaeneus* Dallas.

A and D: heads and anterior portions of pronotum.

B and E: the opening of scent glands in the lateral view.

C and F: antennal segments.

## Family Pentatomidae

155. *Laprius varicornis* (Dallas, 1851)

Jap. name: Futaten-kamemushi

1851 *Sciocoris varicornis* Dallas, List Hemi., 1:136.1870 *Laprius varicornis* Stål, Ofv. Vet.-Ak. Forh., 623.1902 *Laprius varicornis* Distant, Fauna Brit. India, Rhynchota, 1:130, f. 71.1952 *Laprius varicornis* Esaki, Iconogr. Ins. Jap., Hokuryukan, 191, f. 476.

Food plant: Unknown.

Specimen examined: Okinawahonto: 1 Ex., 29. vi. 1958 (O. Nakachi).

Local distr.: Okinawahonto (new record).

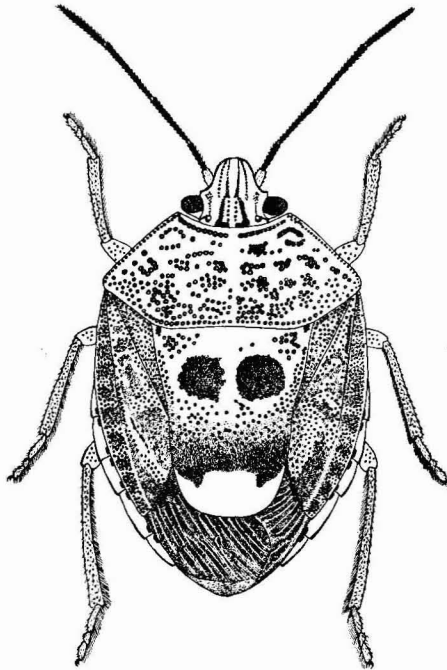
Foreign distr.: Japan, China, India.

114. Genus *Axiagastus* Dallas, 1851.1851 *Axiagastus* Dallas, List Hemi. 1:221.156. *Axiagastus rosmarus* Dallas (Fig. 2)

Jap. name: Futahoshi-tsumajirokamemushi

1851 *Axiagastus rosmarus* Dallas, List Hemi. 1:222, f. 5.1902 *Axiagastus rosmarus* Distant, Fauna Brit. India, Rhynchoia, 1:180, f. 107.

Food plant: Unknown.

Fig. 2. *Axiagastus rosmarus* Dallas.

Specimen examined: Iriomotejima. 1 Ex., 28. vii. 1958 (K. Takara).

Local distr.: Iriomotejima.

Foreign distr.: India, Thailand, Celebes, Philippines.

115. Genus *Vitellus* Stål, 1865

1865 *Vitellus* Stål, Ann. Soc. Ent. Fr. 1865:170.

157. *Vitellus orientalis* Distant, 1900

Jap. name: Minami-tsunokamemushi

1900 *Vitellus orientalis* Distant, Fauna Brit. India, Rhynchota, 1:214, f. 134.

1902 *Vitellus orientalis* Distant, Trans, Ent. Soc. London, 1902: 172, p. 2.

Food plant: Unknown.

Specimen examined: Okinawajima: 1 Ex., 15. ix. 1957 (O. Nakachi).

Local distr.: Okinawahonto.

Foreign distr.: India.

116. Genus *Catacanthus* Spinola, 1837

1837 *Catacanthus* Spinola, Ess. p. 352, 1837.

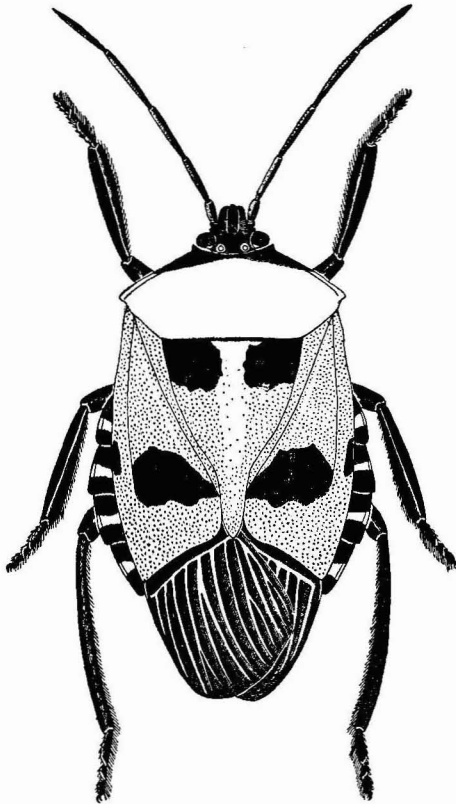


Fig. 3. *Catacanthus incarnatus* (Drury).

158. *Catacanthus incarnatus* (Drury, 1773) (Fig. 3)

Jap. name: Ô-akakamemushi

- 1773 *Cimex incarnatus* Drury, Ill. 2: 67, p. 36, f. 5.  
 1775 *Cimex nigripes* Fabricius, Syst. Ent., 1775, p. 710  
 1776 *Cimex aurantius* Sulzer, Gesch. Ins., 1776: 96, t. 10.  
 1776 *Cimex melanopus* Gmelin, Syst. Nat., 1 (4): 2419.  
 1803 *Edessa incarnatus* Fabricius, Syst. Rhyng., 1803: 149.  
 1840 *Pentatoma auranticum* Blanchard, Hist. des Ins., 3: 29, Hem. t. 6, f. 4.  
 1851 *Catacanthus incarnatus* Dallas, List. Hem., 1: 270.  
 1902 *Catacanthus incarnatus* Distant, Fauna Brit. India, Rhynchota, 1: 219.

Food plant: Unknown.

Specimen examined: Okinawahonto: 1 Ex., ix. 1957 (O. Nakazato).

Local distr.: Okinawahonto.

Foreign distr.: India, Ceylon, Burma, Malaya, Korea, Japan.

## Family Coreidae

117. Genus *Pendulinus* Thunberg, 1822

- 1822
- Pendulinus*
- Thunberg, Hem. rost, Cap., 4: 5.

159. *Pendulinus pallidus* (Stål, 1870)

Jap. name: Akaheri-herikamemushi

- 1870
- Dasynus pallidus*
- Stal, Ofv. Vet.-Ak. Forh. 1870. no. 7: 651.

Food plant: Unknown.

Specimen examined: Ishigakijima, 1 Ex., 26. viii. 1956 (T. Takara).

Local distr.: Ishigakijima.

Foreign distr.: Philippines.

118. Genus *Stenocephalus* Latreille, 1852.

- 1852
- Stenocephalus*
- Latreille, Fam. Nat., 1852: 421.

160. *Stenocephalus lateralis* Signoret, 1879

Jap. name: Ryukyu-shiroherikamemushi

- 1879 *Stenocephalus lateralis* Signoret, Bull. Soc. Ent. Fr., 1879: 58.  
 1880 *Stenocephalus orientalis* Distant, Ent. Month. Mag., 16: 202.  
 1902 *Stenocephalus lateralis* Distant, Fauna Brit. India, Rhynchota, 1: 406, f. 1.

Food plant: Unknown.

Specimens examined: Okinawahonto: 1 Ex., 15. iii. 1959 (O. Nakachi).

Local distr.: Okinawahonto.

Foreign distr.: India, Ceylon.

## Family Lygaeidae

161. *Pachybrachius nigriceps* (Dallas, 1852) (Fig. 4)

Jap. name: Minami-hyotan-nagakamemushi

- 1852
- Rhyparochromus nigriceps*
- Dallas, List Hemi. Brit. Mus., 2: 577.

- 1874 *Pamera nigriceps* Stål, En. Hemi., 4: 152.  
 1878 *Pamera nigriceps* White, Ann. Mag. Nat. Hist., 5(1): 365-374.  
 1908 *Orthea nigriceps* Kirkaldy, Proc. Linn. Soc. N. S. Wales, 33: 358.  
 1927 *Pamera nigriceps* Cheesman, Trans. Ent. Soc. London, 1927: 157.  
 1930 *Orthea nigriceps* China, Ins. Samoa, Brit. Mus., 1930: 129.  
 1946 *Pachybrachius nigriceps* Usinger, Ins. Guam, Bishop Mus., 1946: 30.  
 1948 *Pachybrachius nigriceps* Zimmerman, Ins. Hawaii, 3: 117, f. 42.  
 1959 *Pachybrachius nigriceps* Hidaka, Akitu, 8(2): 45, f. 2.

Food plant: Unknown.

Specimens examined: Ishigakijima: 2 Exs., 15. viii. 1959 (S. Higashi-hirachi).

Local distr.: Ishigakijima.

Foreign distr.: Japan, Hawaii.

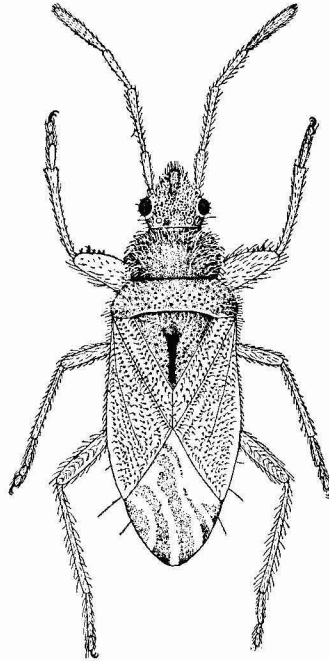


Fig. 4. *Pachybrachius nigriceps* (Dallas).

162. ***Pachybrachius punctulatus*** (Motschulsky, 1863) (Fig. 5)

Jap. name: Madara-hyotan-nagakamemushi

- 1863 *Plociomeria punctulatus* Motschulsky, Bull. Soc. Nat. Mosc., 1863: 79.  
 1904 *Pamera punctulatus* Distant, Fauna Brit. India, Rhynchota, 2: 54.

Food plant: Unknown.

Specimens examined: Okinawahonto: 2 Exs., 12. viii. 1959 (T. Takara);  
 S. Daitojima: 8 Exs., 2. viii. 1958 (T. Takara); Ishigakijima: 3 Exs., 11. viii.

1958 (S. Higashihirachi).

Local distr.: Okinawahonto (new record), S. Daitojima (new record), Ishigakijima (new record).

Foreign distr.: Japan (Tokara Is., and Amami-Oshima), Burma, Ceylon, India.

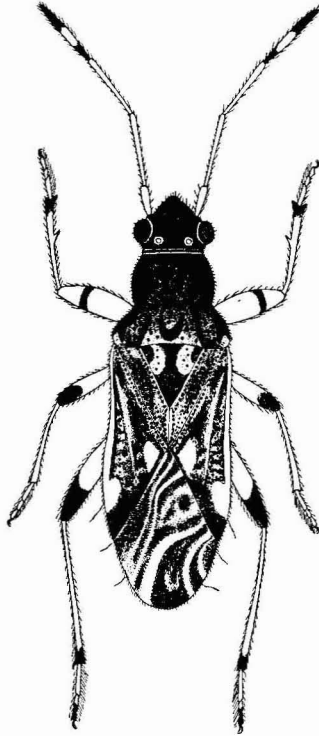


Fig. 5. *Pachybrachius punctulatus* (Motschulsky).

163. *Cligenes formosanus* Hidaka, 1959

Jap. name: Chibi-nagakamemushi

1959 *Cligenes formosanus* Hidaka, Akitu, 8(1): 3, f. 2 (Formosa)

Food plant: Unknown.

Specimens examined: Okinawahonto: 10 Exs., 15. viii. 1959 (T. Takara); S. Daitojima: 10 Exs., 3. viii. 1958 (T. Takara).

Local distr.: Okinawahonto (new record), S. Daitojima (new record).

Foreign distr.: Formosa.

164. *Clerada apicicornis* Signoret, 1862

Jap. name: Minami-nagakamemushi

1862 *Clerada apicicornis* Signoret, Notes sur 1 Ile de la Reunion, Ins. 1862; 28, pl. 20, f. 8.



1865 *Clerada apicicornis* Stål, Hemi. Afr., 2: 155.

1872 *Gastrodes terminalis* Walker, Cat. Het., 5: 122.

1901 *Clerada apicicornis* Distant, Ann. Mag. Nat. Hist. (7), 8: 476.

1904 *Clerada apicicornis* Distant, Fauna Brit. India, Rhynchota, 2: 45, f. 32.

Food plant: Unknown.

Specimen examined: Okinawahonto: 1 Ex., 24. viii. 1957 (O. Nakachi).

Local distr.: Okinawahonto (new record).

Foreign distr.: India, Ceylon, Samoa, Mexico, West Indies.

### Family Tingidae

#### 165. *Stephanitis fasciicarina* Takeya, 1931

Jap. name: Kusu-gunbai

1931 *Stephanitis fasciicarina* Takeya, Mushi, 4: 70, t. 7.

1937 *Stephanitis fasciicarina* Drake et Poor, Iowa State Coll. Jour. Sci., 11: 403.

1948 *Stephanitis fasciicarina* Drake, Notes d'ent. Chinose, 12: 55.

1948 *Stephanitis kyushuana* Drake, Notes d'ent. Chinose, 12: 52-55.

1951 *Stephanitis fasciicarina* Takeya Kurume Univ. Jour. (Nat. Sci.), 4(1): 10.

Food plant: Lauraceae-*Cinnamomum Camphora* Sieb. (Kusunoki), *Machilus Thunbergii* S. et Z. (Tabu).

Specimens examined: Okinawahonto: 10 Exs., 20. iv. 1958 (T. Takara).

Local distr.: Okinawahonto (new record).

Foreign distr.: Japan.