

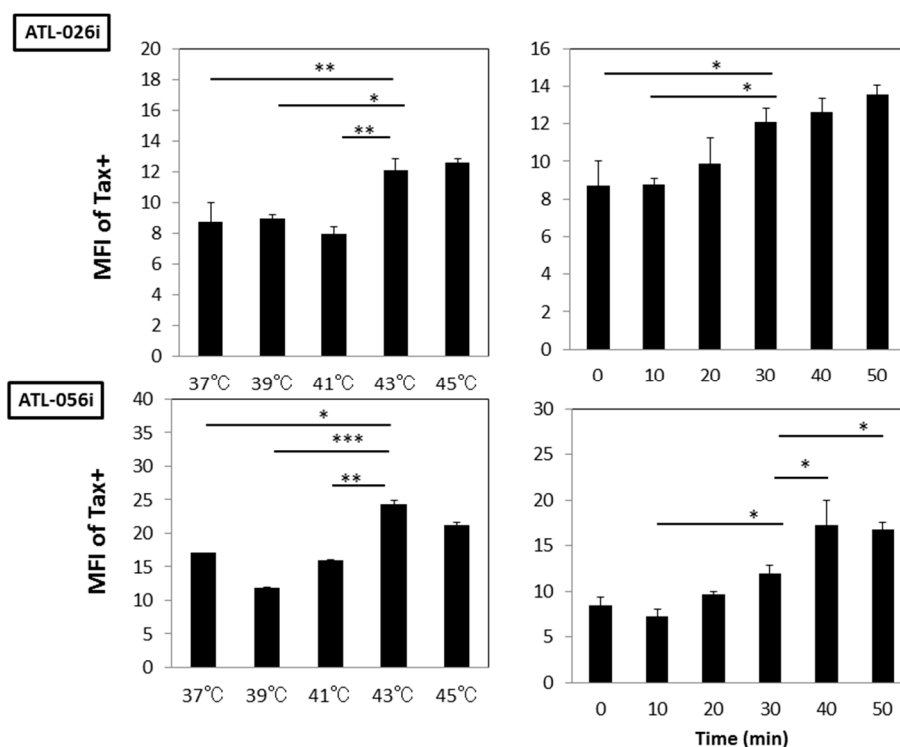
## 琉球大学学術リポジトリ

ヒートショックは、ヒトT細胞白血病ウイルスI型（HTLV-1）感染者由来の初代培養と継代培養されたT細胞のTax抗原発現を促進する

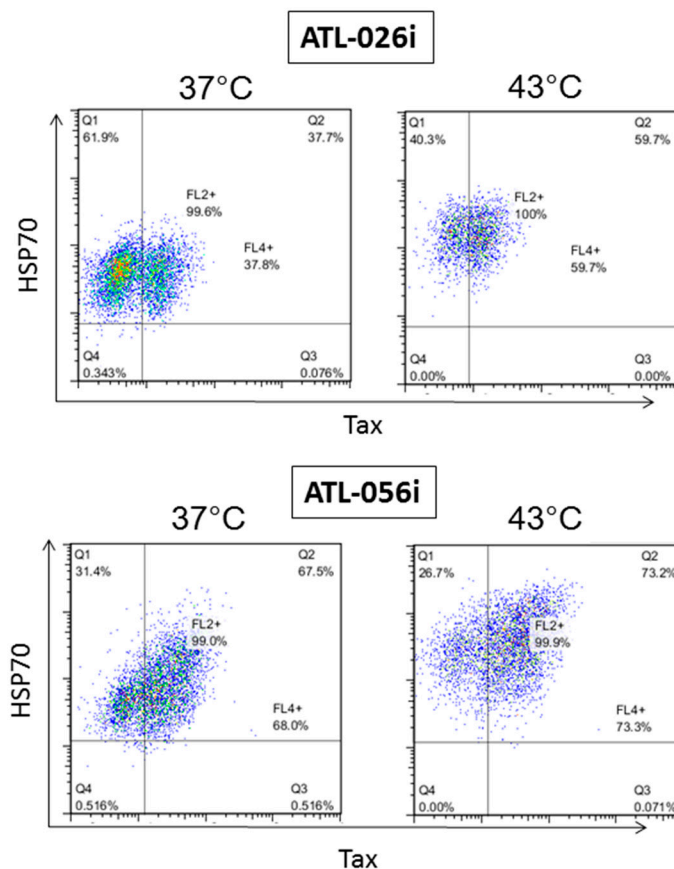
メタデータ	言語: 出版者: 琉球大学 公開日: 2017-05-17 キーワード (Ja): キーワード (En): HTLV-I, Tax, heat shock, adult T cell leukemia (ATL) 作成者: 国廣, 真里枝, Kunihiro, Marie メールアドレス: 所属:
URL	<a href="http://hdl.handle.net/20.500.12000/36646">http://hdl.handle.net/20.500.12000/36646</a>

## Supplementary Materials: Heat Shock Enhances the Expression of the Human T Cell Leukemia Virus Type-I (HTLV-I) Trans-Activator (Tax) Antigen in Human HTLV-I-Infected Primary and Cultured T Cells

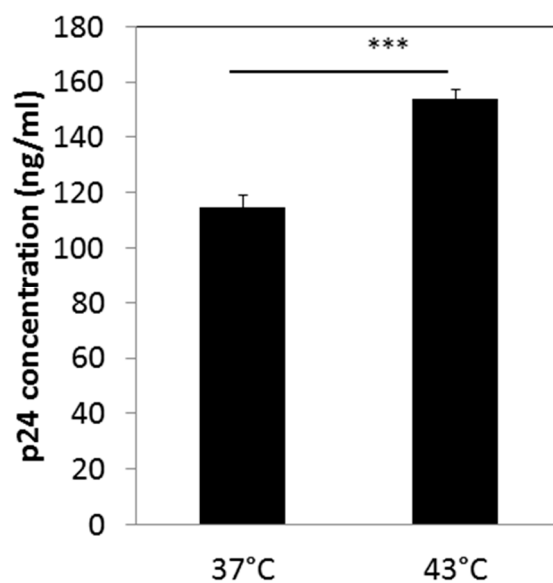
Marie Kunihiro, Hideki Fujii, Takuya Miyagi, Yoshiaki Takahashi, Reiko Tanaka, Takuya Fukushima, Aftab A Ansari, and Yuetsu Tanaka



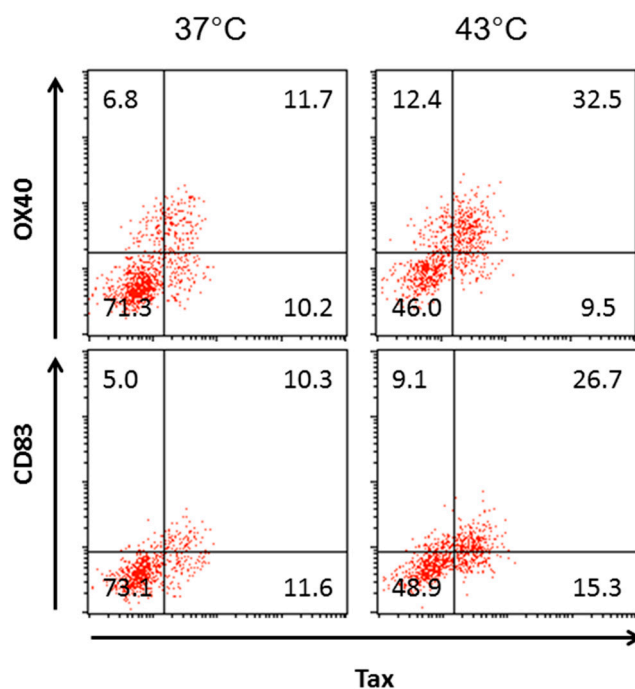
**Figure S1.** HS increased the MFI of Tax<sup>+</sup> cells: HTLV-I-infected cell lines, ATL-026i and ATL-056i, were either mock treated (37 °C) or exposed to heat stress at 39-45 °C or for 30 min or at 43 °C for 10-50 min. Tax expression at 24 h after heat shock (HS) is shown. The values denote the means ± SD. \* $p$ <0.05, \*\* $p$ <0.01, \*\*\* $p$ <0.001.



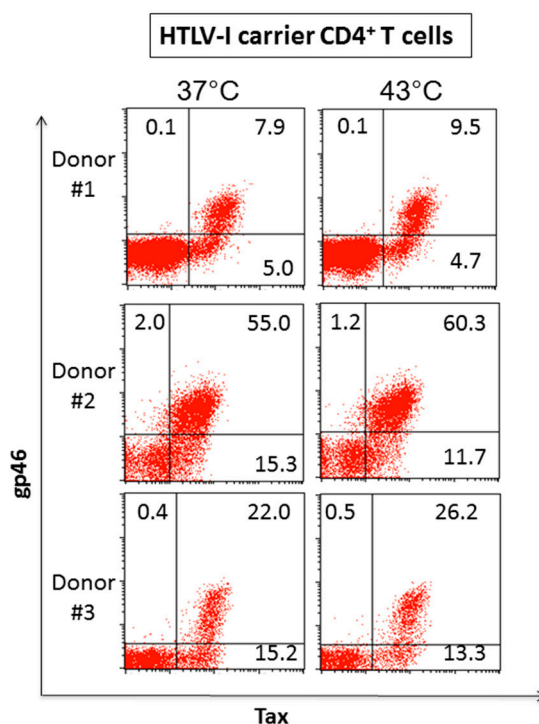
**Figure S2.** Correlation of Tax and HSP70 expression: The HTLV-I-infected cell lines, ATL-026i and ATL-056i, were either mock treated (37 °C) or exposed to heat stress at 43 °C for 30 min. Tax and HSP70 expression one day after HS are shown in dot plot.



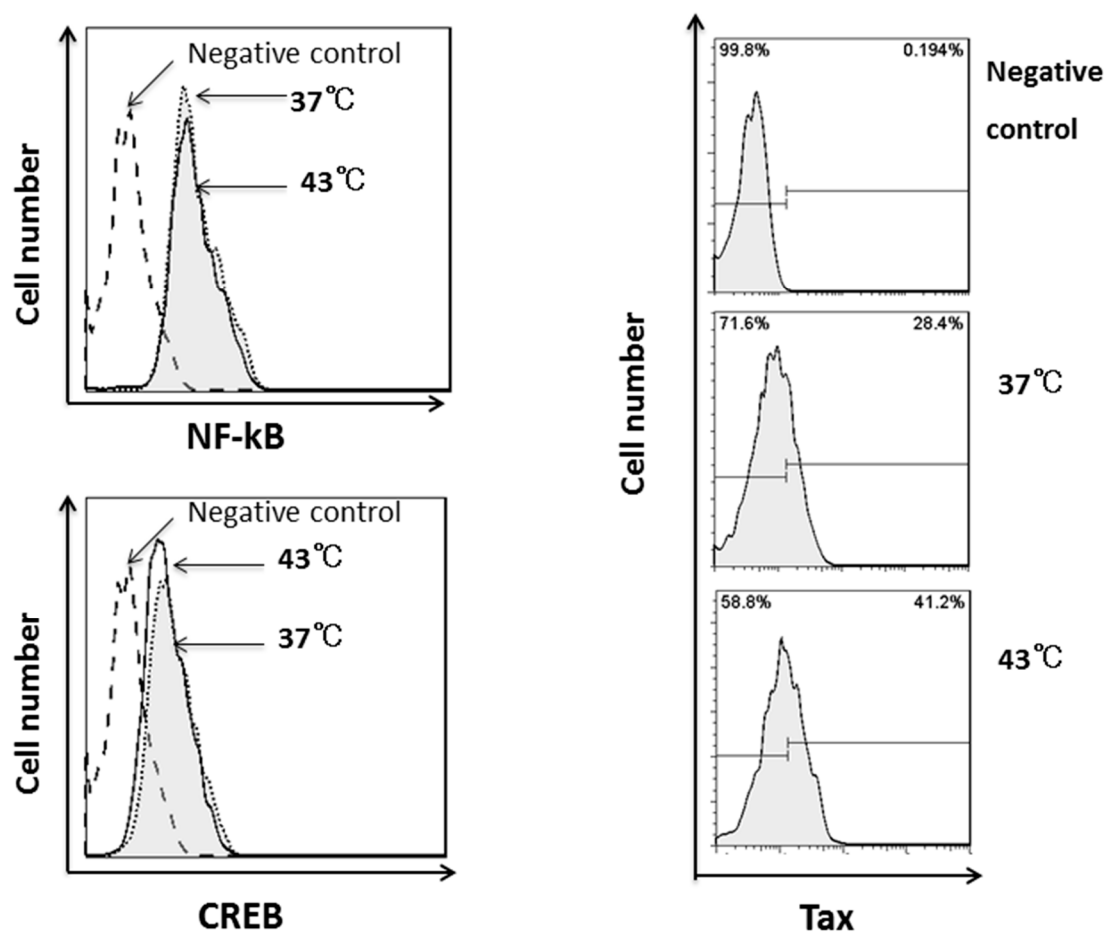
**Figure S3.** HS increased p24 concentration: The HTLV-I-infected cell lines, YT/cM1 was either mock treated or heat shocked. Concentration of p24 in culture supernatant was measured by ELISA at two days after HS. The values denote the means  $\pm$  SD. \*\*\* $p < 0.001$ .



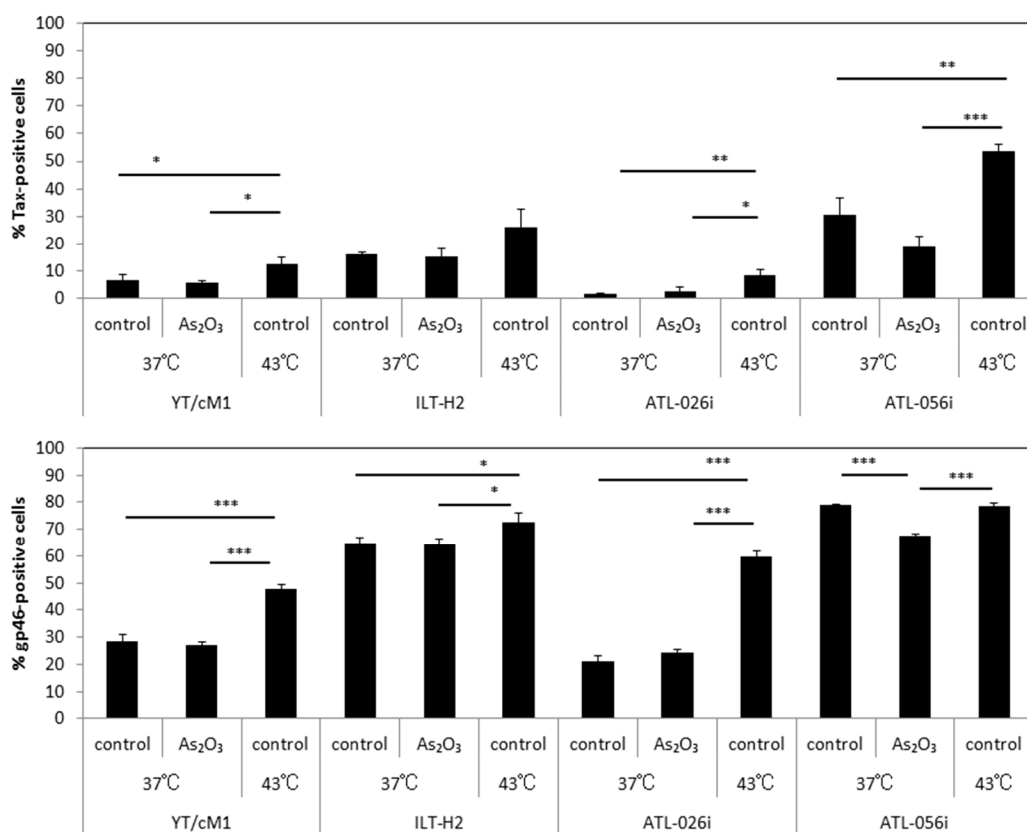
**Figure S4.** Correlation between intra-cellular Tax and cell surface expression of OX40 and CD83: The HTLV-I-infected cell line, ATL-026i, was mock treated (37 °C) or heat shocked at 43 °C or for 30 min. After 24 h cultivation, cells were analyzed for simultaneous expression of Tax, OX40 and CD83.



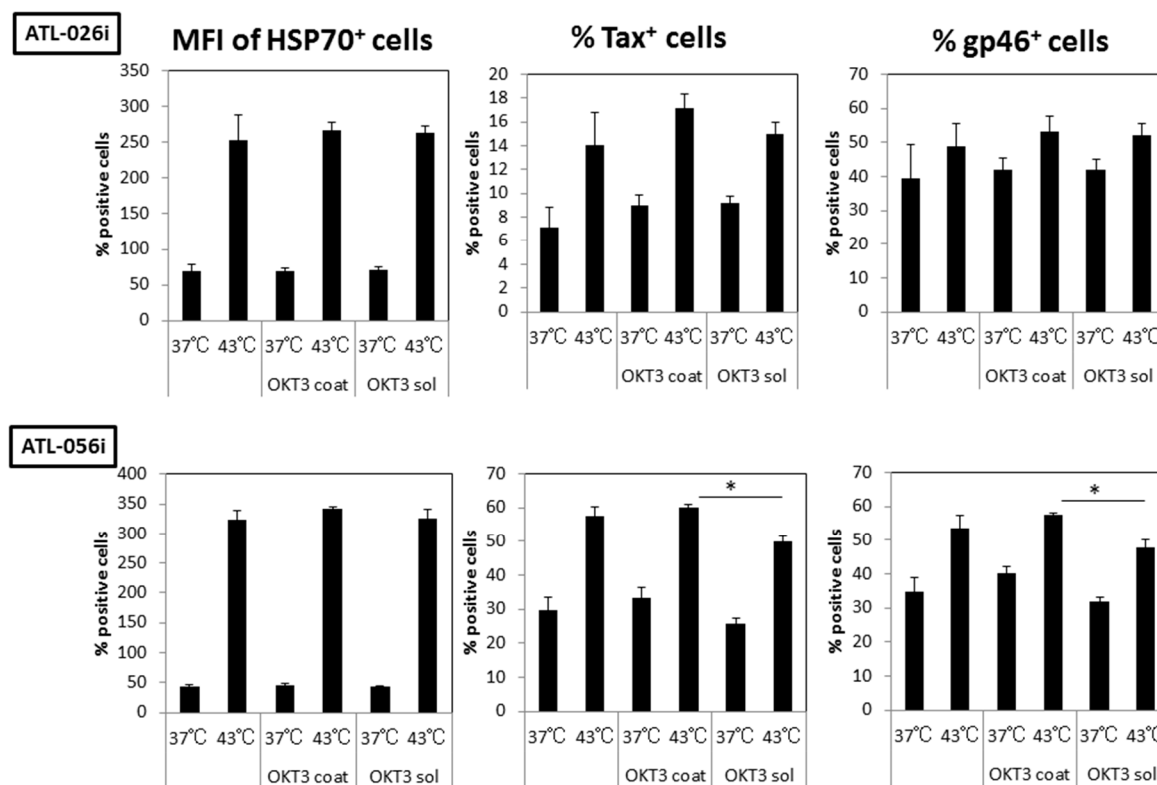
**Figure S5.** HS upregulated expression of Tax and gp46 in fresh PBMC from carriers: Aliquots of diluted whole blood from three different HTLV-I carriers were either exposed to heat shock (43 °C) or mock treated, and then cultured for 24 h. The gated population of CD4<sup>+</sup> T cells was analyzed for the expression of Tax and gp46 antigens by FCM.



**Figure S6.** Effect of HS on the expression of NF-kB and CREB molecules: HTLV-I-infected cell line ATL-056i was mock treated (37 °C) or heat shocked. After 24 h incubation, the intracellular expression of NF-kB and CREB was analyzed by FCM (left panel). Primary antibodies used were rabbit mAbs anti-NF-kB p65 antibody (E379) and anti-CREB antibody (E306) purchased from Abcam (Cambridge, MA, USA) followed by staining with donkey anti-rabbit IgG-FITC (Biolegend, SanDiego, CA, USA). Negative control showed staining with only 2<sup>nd</sup> anti-rabbit IgG antibody. Tax expression of these cells is shown in right panel.



**Figure S7.** The failure of exposure to oxidative stress, As<sub>2</sub>O<sub>3</sub>, to induce increased expression of Tax and gp46: The HTLV-I-infected cell lines YT/cM1, ILT-H2, ATL-026i and ATL-056i, were either mock treated or exposed to heat stress at 43 °C for 30 min or oxidative stress in the presence of 0.25~1.0 μM As<sub>2</sub>O<sub>3</sub>, and then cultured for 24 h. The frequencies of Tax and gp46 expression were analyzed by FCM. The values denote the means ± SD. \**p*<0.05, \*\**p*<0.01, \*\*\**p*<0.001.



**Figure S8.** Failure to stimulate HTLV-I-infected cell lines with anti-CD3 mAb (OKT-3): ATL patient-derived HTLV-I-infected cell lines, ATL-026i and ATL-056i, were mock treated (37 °C) or exposed to heat stress, cultured alone or in the presence of either immobilized OKT-3 (OKT-3 coat) or soluble OKT-3 (2 µg/mL) (OKT-3 sol) for 24 h. Then, Tax, gp46 and HSP70 expression were analyzed by FCM.



© 2016 by the authors, licensee MDPI, Basel, Switzerland. This article is an open access article distributed under the terms and conditions of the Creative Commons Attribution (CC-BY) license (<http://creativecommons.org/licenses/by/4.0/>).