

琉球大学学術リポジトリ

地位協定・SOFAの適用（STG-陸上施設・区域）(5)

メタデータ	言語: 出版者: 公開日: 2019-01-29 キーワード (Ja): ユナイテッド・シーメンズ・サービス, 那覇空港, 橘アメリカ局参事官, リー参謀長, 愛知外務大臣, マイヤー大使, 吉野・スナイダー会談 キーワード (En): 作成者: - メールアドレス: 所属:
URL	http://hdl.handle.net/20.500.12000/43406

6/9 作成 I D E N T I F I C A T I O N L I S T

極 秘
無 期 限
30 部 内
29 号

SECRET
(Draft, June 9, 1971)

RECORD OF DISCUSSION

Detailed identification of the military installations and sites listed in the attachment to the Memorandum of Understanding Concerning Article III of the Agreement Concerning the Ryukyu Islands and the Daito Islands signed today are as set forth in the attached list.

Tokyo, , 1971.

Bunroku Yoshino
Director-General
American Affairs Bureau
Ministry of Foreign Affairs

Richard L. Sneider
Minister
Embassy of the United
States of America

FOR LIST A

NUMBER	NOMENCLATURE	IDENTIFICATION	FOLDER NUMBER
1	<u>Northern Training Area</u>	Grid Coord DE 2553 Map No. 5,187 May 69, G2 USARPAC US Navy Map H.C. 2338 5th Ed, Aug 67 FEC Drawing 1316388 Dec 69	98
2	<u>Aha Training Area</u>	Grid Coord DE 2855 * Multiplex Map Sheet 3727 II SW Series L891 US Navy Map H.O. 2338 5th Ed, Aug 67	
3	<u>Kawata Training Area</u>	Grid Coord DE 1845 * Multiplex Map Sheet 3726 IV NE Series L891 US Navy Map H.O. 2338 5th Ed, Aug 67	
4	<u>Okuma Rest Center</u>	Grid Coord DE 1657 * 15-09-11 30 June 69 US Navy Map H.O. 2338 5th Ed, Aug 67 US Army Map No. 6,005 Jan 70, Engr USARPAC	64

<u>NUMBER</u>	<u>NOMENCLATURE</u>	<u>IDENTIFICATION</u>	<u>FOLDER NUMBER</u>
5	<u>Ie Shima Auxiliary Airfield</u>	Grid Coord CE 7855 * Master Plan, Ie Shima Auxiliary Airfield (2 sheets) Tab No. C-1, 4 15 Aug 67 US Navy Map H.O. 192 11th Ed, Feb 67 US Air Force Map ONC H-13 3rd Ed, Apr 67 US Army Map No. 6,005 Jan 70, Engr USARPAC DOD Flight Information Publication	3
6	<u>Yaetsake Communication Site</u>	Grid Coord CE 9245 15-09-121 30 June 69	79/32/23
7	<u>Gesashi Communication Site</u>	Grid Coord DE 1542 * 973202 9-28-62 US Army Map No. 6,005 Jan 70, Engr USARPAC	120
8	<u>Sedake Training Area</u>	Grid Coord DE 0636 * Multiplex Map Sheet 3726 IV SW Series L891 US Navy Map H.O. 2338 5th Ed, Aug 67	
9	<u>Camp Schwab</u>	<u>Camp Schwab</u> Grid Coord DE 0433 * 1227525 thru 1227528 10 Feb 69 US Navy Map No. 2582 4th Ed, Sep 44	94

<u>NUMBER</u>	<u>NOMENCLATURE</u>	<u>IDENTIFICATION</u>	<u>FOLDER NUMBER</u>
		<u>Camp Schwab Training Area</u> Grid Coord DE 0034 Overlay of multiplex map sheets No. 3626 I SE and 3726 IV SW US Navy Map H.O. 2338 5th Ed, Aug 67	93
		<u>LST Ramp Camp Schwab</u> Grid Coord DE 0533 * 16-06-557 9 Feb 62 Navy Map H.O. 2338 Navy Map No. 2482	110
10	<u>Henoko Ordnance Ammunition Depot</u>	<u>Henoko Ordnance Ammunition Depot</u> Grid Coord DE 0434 * 15-09-120 31 Mar 70 US Navy Map No. 2,582 4th Ed, Sep 44 US Army Map No. 6,005 Jan 70, Engr USARPAC 16-01-573 Mar 68 <u>Navy Ammunition Storage Facilities</u> Grid Coord DE 0434 16-01-573 May 68	66/116
11	<u>Camp Hansen</u>	<u>Camp Hansen</u> Grid Coord CE 8927 Drawings 1227524, 1227520 and 1227521, all dated 10 Feb 69 unnumbered drawing DOD Flight Information Publication Grid Coord CE 8929 1227522 10 Feb 69	89

<u>NUMBER</u>	<u>NOMENCLATURE</u>	<u>IDENTIFICATION</u>	<u>FOLDER NUMBER</u>
		<u>Camp Hansen Training Area</u>	91
		Grid Coord DE 9631 1152746 10 Feb 69	
12	<u>Kushi Training Area</u>	Grid Coord DE 0131 * Multiplex Map Sheet 3726 IV SW Series L891 US Navy Map No. 2582 4th Ed, Sep 44, US Navy Map H.O. 2338 5th Ed, Aug 67	
13	<u>Onna Point Communi- cation Site</u>	Grid Coord CE 8530 * Master Plan Onna Point Admin Annex Tab No. C-1, 4 15 Aug 67 US Army Map No. 6,005 Jan 70 Engr USARPAC	101
14	<u>Camp Hardy</u>	Grid Coord DE 005290 * 15-09-86 30 June 69 US Army Map No. 6,005 Jan 70, Engr USARPAC	50
15	<u>Onna Point Site</u>	Grid Coord CE 8427 and 8326 15-09-112 30 June 69	57
16	<u>Yaka Training Area</u>	Grid Coord CE 8526 Multiplex Map Sheet 3626 II NW Series L891	

<u>NUMBER</u>	<u>NOMENCLATURE</u>	<u>IDENTIFICATION</u>	<u>FOLDER NUMBER</u>
17	<u>Gimbaru Training Area</u>	<u>Gimbaru Training Area</u> Grid Coord CE 9526 * 1152745 5 Jul 69 and over- lay US Army Map No. 6,005 Jan 70, Engr USARPAC DOD Flight Infor- mation Publication	100/33/10
		<u>Kadena Site No. 3</u> 15-09-34 June 69	10
18	<u>Yaka Rest Center</u>	Grid Coord CE 8625 * 15-09-34 30 June 69 18-02-5210, Mar 64 US Navy Map H.O. 6131 1st Ed, Dec 57 US Army Map No. 6,005 Jan 70, Engr USARPAC	84
19	<u>Kin Red Beach Training Area</u>	Grid Coord CE 9125 * 16-06-639 2 June 66 US Navy Map H.O. 6131 1st Ed, Dec 57 US Navy Map H.O. 2338 5th Ed, Aug 67	111
20	<u>Kin Blue Beach Training Area</u>	Grid Coord CE 9524 * Drawing enlarged from multiplex map sheet No. 3626 II NE US Navy Map H.O. 6131 1st Ed, Dec 57 US Army Map No. 6,005 Jan 70, Engr USARPAC US Navy Map H. O. 2338 5th Ed, Aug 67	90

<u>NUMBER</u>	<u>NOMENCLATURE</u>	<u>IDENTIFICATION</u>	<u>FOLDER NUMBER</u>
21	<u>Bolo Point Trainfire Range</u>	<u>Bolo Point Trainfire Range</u> Grid Coord CE 7222 * 15-09-123 30 June 69 US Navy Map H.O. 1917 1st Ed, Apr 66 DOD Flight Information Publication US Army Map No. 6,005 Jan 70, Engr USARPAC Multiplex Map Sheet 3626 III NE Series L891	27
		<u>Kadena Site No. 1</u> Grid Coord CE 7220 Basic Layout Plan Mace Site No. 1 Tab No. C-1 15 Nov 63	8
		<u>U.S. Army Annex Bolo Point</u> Grid Coord CE 7323 Map No. 5,187 May 69, G2 USARPAC & Sketch dtd 5 Aug 69	119
		<u>Yomitan Army Annex No. 1</u> Grid Coord CE 7323 and 7421 15-09-111 30 June 69	56

<u>NUMBER</u>	<u>NOMENCLATURE</u>	<u>IDENTIFICATION</u>	<u>FOLDER NUMBER</u>
22	<u>Kadena Ammunition Storage Area</u>	<u>Kadena Ammunition Storage Annex</u> Grid Coord CE 7719 Master Plan Kadena Ammo Storage Annex Tab No. C-1, 4 (3 sheets) 15 Aug 67	6
		<u>Site Hizagawa</u> Grid Coord CE 7616 15-09-80 June 69	73
		<u>Hanza Ammunition Storage Annex</u> Grid Coord CE 7521 * Master Plan Hanza Ammo Storage Annex Tab No. C-1, 4 15 Aug 67	
		<u>Joint Ordnance Explosive Demolition Area, Yomitan</u> Grid Coord CE 7521 * 15-09-69 30 June 69	45
		<u>USA GSC Ammunition Storage Area</u> Grid Coord CE 7920	118
		<u>Chibana Ordnance Ammunition Depot</u> Grid Coord CE 7918 15-09-58 30 June 69	65
		<u>Kadena VORTAC Site</u> Grid Coord CE 8017 Army Map, Ryukyu Retto 1:25,000 Kin SW, sheet 3626 II SW L891	14

Composite service Group

<u>NUMBER</u>	<u>NOMENCLATURE</u>	<u>IDENTIFICATION</u>	<u>FOLDER NUMBER</u>
		<u>Kadena TACAN ^{Site} Annex</u> Grid Coord CE 7917 Master Plan Tab No. C-1, 4 15 Aug 67	13
		<u>Higashionna ^{Ammunition} Ammo Storage Annex</u> Grid Coord CE 8219 1227533 and 1227534 10 Feb 69	96
23	<u>Chibana Site</u>	<u>Chibana Army Annex</u> Grid Coord CE 7921 15-09-125 30 June 69 Multiplex Map Sheet 3626 II SW Series. I891	12/35
		<u>Kina Radio Relay Annex</u> Grid Coord CE 7921 15-09-125 30 June 69	12/35
24	<u>Ishikawa Army Annex</u>	Grid Coord CE 8319 and 8320 15-09-113 30 June 69	58
25	<u>Yomitan Army Annex</u>	Grid Coord CE 7321 15-09-124 30 June 69	34

<u>NUMBER</u>	<u>NOMENCLATURE</u>	<u>IDENTIFICATION</u>	<u>FOLDER NUMBER</u>
26	<u>Sobe Communication Site</u>	<u>Naval Communications Site; Sobe Annex</u> Grid Coord CE 7320 NAVFAC Drawing No. 1049966 13 Oct 69	109
		<u>Direction Finder Site Sobe, East</u> Grid Coord CE 7319 18-04-331 Mar 69	109 80
27	<u>Yomitan Auxiliary Airfield</u>	<u>Yomitan Auxiliary Airfield</u> Grid Coord CE 7419 * Master Plan, Tab No. C-1, 4 15 Aug 67	17
		<u>Site Nakano</u> Grid Coord CE 7519 15-09-97 30 June 69	76
28 29	<u>Camp Courtney</u>	Grid Coord CE 8618 * Index of Structures USMC Drawing 1227518 10 Feb 69 Two USMC unnumbered drawings	86
29 30	<u>Tengan Communication Site</u>	Grid Coord CE 8617 15-09-95 30 June 69	81

<u>NUMBER</u>	<u>NOMENCLATURE</u>	<u>IDENTIFICATION</u>	<u>FOLDER NUMBER</u>
30 28	<u>Tengan Pier</u>	Grid Coord CE 8520 * NAVFAC Drawing No. 1049963 13 Oct 69 US Navy Map H.O. 6131 1st Ed, Dec 57 US Army Map No. 6,005 Jan 70, Engr USARPAC US Navy Map H.O. 2338 5th Ed, Aug 67	103
31	<u>Camp. McTureous</u>	Grid Coord CE 8417 1227531 10 Feb 69 and unnumbered drawing	87
32	<u>Camp Shields</u>	Grid Coord CE 8116 NMCB 3 Dwg. No. 300569 6 Oct 69	102
33	<u>Camp Hauge</u>	Grid Coord CE 8216 Index of Structures NAVFAC Dwg. No. 1227535 10 Feb 69 and unnumbered drawing	88
34	<u>Deragawa Communica- tion Site</u>	Grid Coord CE 8615 15-09-131 30 June 69	31
35	<u>Hanza Army Annex</u>	Grid Coord CE 7318 15-09-68 30 June 69	72

<u>NUMBER</u>	<u>NOMENCLATURE</u>	<u>IDENTIFICATION</u>	<u>FOLDER NUMBER</u>
36	<u>Torii Communication Station</u>	<u>Torii Station, Sobe</u> Grid Coord CE 7417 * 15-09-64 30 June 69 US Army Map No. 6,005 Jan 70, Engr USARPAC	26
		<u>Starcom Receiver Station, Sobe</u> Grid Coord CE 7416 15-09-83 (2 sheets) 30 June 69	80
37	<u>Kadena Air Base</u>	<u>Kadena Air Base</u> Grid Coord CE 7714 * Master Plan Tab C-2 31 Dec 67 US Army Map No. 6,005 Jan 70, Engr USARPAC	1/71/73
38	<u>Sunabe Warehouse</u>	<u>Camp Sansone</u> Grid Coord CE 7515 15-09-78 30 June 69	71
		<u>Kadena Housing Area State Dept.</u> Grid Coord CE 7512 Master Plan Tab C-1, Sheet 3 of 4	1
39	<u>Sunabe Army Annex</u>	<u>US Army Housing Area</u> Grid Coord CE 7512 Master Plan Tab C-1, Sheet 3 of 4	1
40	<u>Kashiiji Army Annex</u>	Grid Coord CE 7512 15-09-88 30 June 69	74

打
込
区
し

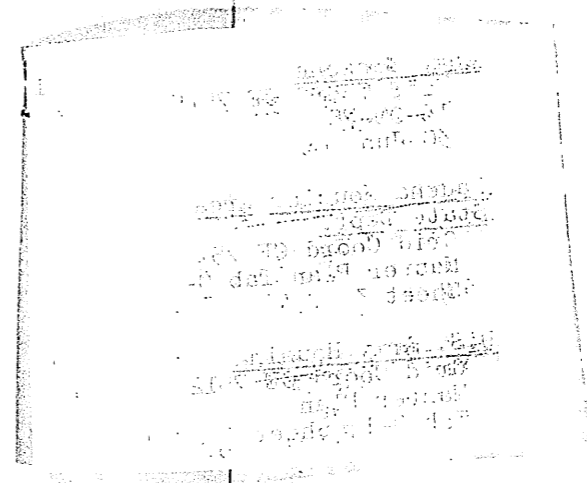
別紙挿入

38
 39
 30
 31

打
区
し

<u>NUMBER</u>	<u>NOMENCLATURE</u>	<u>IDENTIFICATION</u>	<u>FOLDER NUMBER</u>
36	<u>Torii Communication Station</u>	<u>Torii Station, Sobe</u> Grid Coord CE 7417 * 15-09-64 30 June 69 US Army Map No. 6,005 Jan 70, Engr USARPAC	26
		<u>Starcom Receiver Station, Sobe</u> Grid Coord CE 7416 15-09-83 (2 sheets) 30 June 69	80
37	<u>Kadena Air Base</u>	<u>Kadena Air Base</u> Grid Coord CE 7714 * Master Plan Tab C-2 31 Dec 67 US Army Map No. 6,005 Jan 70, Engr USARPAC	1/71/73
38	<u>Sunabe Warehouse</u>	<u>Warehouse Sunabe</u> Grid Coord CE 7512 Map No. 5,187 May 69, G2 USARPAC	25
		<u>Air Force Furniture Repair Shop</u> Grid Coord CE 7512 Map No. 5,187 May 69, G2 USARPAC	25
39	<u>Sunabe Army Annex</u>	Grid Coord CE 7512 15-09-77 30 June 69	78
40	<u>Kashiiji Army Annex</u>	Grid Coord CE 7512 15-09-88 30 June 69	74

別紙挿入



<u>NUMBER</u>	<u>NOMENCLATURE</u>	<u>IDENTIFICATION</u>	<u>FOLDER NUMBER</u>
41	<u>Kadena Housing Area</u>	Grid Coord CE 7516 Master Plan Tab No. C-1, 4 15 Aug 67	7
42	<u>Koza Communication Site</u>	Grid Coord CE 8112 Master Plan Tab No. C-1, 4 15 Aug 67	15
43	<u>Camp Kue</u>	Grid Coord CE 7610 * 15-09-48 dtd 30 June 69	29
44	<u>Camp Sukiran</u>	<u>Camp Sukiran</u> Grid Coord CE 7708 * 18-02-5235 15-Dec 66 US Navey Map H.O. 1917 1st Ed Apr 66 US Army Map No. 6005 Jan 70, Engr USARPAC 15-09-52 Drawings (4 Sheets) dtd 30 June 69 15-07-05 (Sheet 1.9 of 2) dtd 15 Nov 68	30
	<u>Camp Foster</u>	Grid Coord CE 7607 NAVFAC Index of Structures No. 1227529 10 Feb 69 and unnumbered drawing	85

<u>NUMBER</u>	<u>NOMENCLATURE</u>	<u>IDENTIFICATION</u>	<u>FOLDER NUMBER</u>
45	<u>Sukiran Communication Site</u>	Grid Coord CE 7811 15-09-07 30 June 69	82
46	<u>Awase Communication Station</u>	<u>Awase Communications Annex</u> Grid Coord CE 8309 * Master Plan Tab No. C-1 (2 sheets) 6 Oct 69 and Tab C-2 15 Aug 67 US Army Map No. 6,005 Jan 70, Engr USARPAC	4
		<u>Naval Air Facility Naha Transmitter Unit Awase</u> Grid Coord CE 8410 * NAVFAC Drawing No. 1153855 25 Mar 70 US Army Map No. 6,005 Jan 70, Engr USARPAC	108
47	<u>Nishihara Army Annex</u>	Grid Coord CE 8811 and 9110 15-09-114 30 June 69	59

- 14 -

<u>NUMBER</u>	<u>NOMENCLATURE</u>	<u>IDENTIFICATION</u>	<u>FOLDER NUMBER</u>
48	<u>White Beach Facilities</u> <i>Area</i>	Naval Port Facility <u>White Beach</u> Grid Coord CE 9108 * 1050516 13 Oct 69 US Navy Map H.O. 2338 5th Ed, Aug 67	105
		<u>Kachin Hanto Army Area</u> Grid Coord CE 9008 * 15-09-40 30 June 69 US Navy Map H.O. Anch CE 2d Ed, Oct 51 US Army Map No. 6,005 Jan 70, Engr USARPAC	46
		<u>White Beach Tank Farm</u> Grid Coord CE 9009 Unnumbered and undated DE drwg	124
		<u>Kadena Site No. 2</u> Grid Coord CE 9009 Basic Layout Plan Mace Site No. 2 Tab No. C-1 15 Nov 63	9
		<u>Nishihara Army Annex No. 2</u> Grid Coord CE 9009 15-09-126 30 June 69	26
49	<u>Awase Storage Area</u>	Grid Coord CE 8009 NAVFAC Drawing No. 1152763 10 Feb 69	95

- 15 -

<u>NUMBER</u>	<u>NOMENCLATURE</u>	<u>IDENTIFICATION</u>	<u>FOLDER NUMBER</u>
50	<u>Kubasaki School Area</u>	Grid Coord CE 8107 * 15-09-46 30 June 69 US Army Map No. 6,005 Jan 70, Engr USARPAC	28
51	<u>Futenma Air Station</u>	<u>Marine Corps Air Station</u> Futenma Communications Annex, Kadena Grid Coord CE 7505 * NAVFAC PWO Dwg No. 70-1 9 Oct 68 (2 sheets)	92
		<u>Futenma Army Annex</u> Grid Coord CE 7504 and 7405 15-09-115 30 June 69	60
		<u>Marine Corps Air Station Futenma-800 Compound Communications Annex, Futenma</u> NAVFAC Drawing No. 1152995 13 Oct 69	106
52	<u>Camp Mercy</u>	Grid Coord CE 7405 * 15-09-33 30 June 69 15-03-13, 20 Mar 63 US Army Map No. 6,005 Jan 70, Engr USARPAC	47
53	<u>Camp Boone</u>	Grid Coord CE 7305 * 15-09-32 30 June 69 US Army Map No. 6,005 Jan 70, Engr USARPAC	48

<u>NUMBER</u>	<u>NOMENCLATURE</u>	<u>IDENTIFICATION</u>	<u>FOLDER NUMBER</u>
54	<i>Machinato</i> Okinawa-Regional <u>Exchange-Dry-Storage</u> <u>Warehouse</u>	Grid Coord CE 7205 Map No. 5, 187 May 69, G2 USARPAC	25
55	<u>Machinato Service</u> <u>Office</u>	Grid Coord CE 7205 Map No. 5, 187 May 69, G2 USARPAC	25
56	<u>Machinato Service</u> <u>Area</u>	Grid Coord CE 7003 * 15-09-26 (2 sheets) 30 June 69 US Navy Map H.O. 6132 2d Ed, Aug 67 US Army Map No. 6,005 Jan 70, Engr USARPAC	49
57	<u>Machinato Service</u> <u>Area Annex</u>	<i>Warehouse</i> 7th PSYOP Group Wase Grid Coord CE 7104 Map No. 5, 187 May 69, G2 USARPAC <u>Navy Warehouse, Machinato</u> Grid Coord CE 7104 Map No. 5, 187 May 69, G2 USARPAC	25
58	<u>Machinato Purchasing</u> <u>and Contracting</u> <u>Office</u>	Grid Coord CE 7104 Map No. 5, 187 May 69, G2 USARPAC	25
59	<u>Urasoe Warehouse</u>	Grid Coord CE 6902 Map No. 5, 187 May 69, G2 USARPAC	25
60	<u>Deputy Division</u> <u>Engineers Office</u>	Grid Coord CE 7403 Map No. 5, 187 May 69, G2 USARPAC	25

<u>NUMBER</u>	<u>NOMENCLATURE</u>	<u>IDENTIFICATION</u>	<u>FOLDER NUMBER</u>
61	<u>Machinato Housing Area</u>	Grid Coord CE 6900 15-09-28 30 June 69	54
62	<i>Naha</i> Okinawa-Regional <u>Exchange Cold Storage</u>	Grid Coord CD 6799 Map No. 5, 187 May 69, G2 USARPAC	25
63	<u>Harborview Club</u>	Grid Coord CD 6898 15-09-37 Undated	53
64	<u>Naha Port Facilities</u>	Grid Coord CD 6798 * 15-09-55 30 June 69 US Navy Map No. 1,912 8th Ed, Dec 63 US Army Multiplex Map Sheet 139, 1st Ed, 1948	68
65	<u>Naha Service Center</u>		
66	<u>Naha Air Force / Navy</u> <u>Annex</u>	Grid Coord CD 6697 *	

<u>NUMBER</u>	<u>NOMENCLATURE</u>	<u>IDENTIFICATION</u>	<u>FOLDER NUMBER</u>
67	<u>Naha Site</u>	Grid Coord CD 6497 and CD 6596 15-09-118 30 June 69	63
68	<u>Chinen Site No. 1</u>	Grid Coord CD 7893 15-09-128 30 June 69	38
69	<u>Chinen Site No. 2</u>	Grid Coord CD 8194 and 7993 15-09-116 30 June 69	61
70	<u>Shinzato Communication Site</u>	Grid Coord CD 7693 Feb 66 Topographical Map.	118
71	<u>Chinen Service Area</u>	Grid Coord CD 7891 Unnumbered bldg layout plan, dtd 13 Jan 69 and unnumbered Ammo storage plan dtd 20 Jan 69 US Army Map No. 6,005 Jan 70, Engr USARPAC unnumbered and undated drawing of Camp Chinen showing commo/power/sewer/water ROW	118
72	<u>Yozadake Air Station</u>	Grid Coord CD 7089 and 7289 Master Plan Yozadake Air Station Tab No. C-1, 4 15 Aug 67	22

<u>NUMBER</u>	<u>NOMENCLATURE</u>	<u>IDENTIFICATION</u>	<u>FOLDER NUMBER</u>
73	<u>Yozadake Site</u>	Grid Coord CD 7188 15-09-129 30 June 69	39
74	<u>Yozadake Army Annex</u>	Grid Coord CD 7287 and 7289 15-09-117 30 June 69	62
75	<u>South Storage Area</u>	Grid Coord CD 7286 * and 7387 15-09-119 30 June 69	55
76	<u>Army POL Depot</u>	Camp Kue Tank Farm No. 1 Camp Kue Tank Farm No. 2 Chimu-Wan Tank Farm Nos. 1, 2, 3. Tengan Booster Station Camp Kue Booster Station General POL map * 18-02-5234 1 June 66 Unnumbered and undated drawing Camp Kue Tank Farm No. 1 Unnumbered and undated drawing Camp Kue Tank Farm No. 2 Unnumbered and undated drawing Chimu-Wan Tank Farm No. 1, 2 & 3 78-10-10 dtd 4 April 1954	67 122 123 125-128 130 130

<u>NUMBER</u>	<u>NOMENCLATURE</u>	<u>IDENTIFICATION</u>	<u>FOLDER NUMBER</u>
		Unnumbered and undated drawing Camp Kue Booster Station Overlay of Ryukyu-Retto Multiplex Map Sheets 1 and 2 Scale 1:25,000	2 2 2 2 2 2
77	<u>Tori Shima Range</u>	Located approx 65 miles * NW of City of Naha in the East China Sea, 126° 50' long 26° 36' lat DOD Flight Information Publication Master Plan, Ryukyu Air Range Tab No. C-1, 4 15 Aug 67	16
78	<u>Irisuna Shima Range</u>	Located approx 35 miles * West of Okinawa in the East China Sea, 127° 5' long 26° 24' lat DOD Flight Information Publication Master Plan Irisuna Shima Air Range Tab No. C-1, 4 15 Aug 67 US Air Force Map ONC H-13 3rd Ed, Apr 67	5
79	<u>Kume Shima Air Station</u>	<u>Kume Shima Air Station</u> Located approx 70 miles NW of the City of Naha in the East China Sea 126° 46' long 26° 22' lat DOD Flight Information Publication Master Plan Kume Shima Air Station Tab No. C-1, 4, 15 Aug 67 US Navy Map H.O: 2581 4th Ed, May 67 US Air Force Operational Navigation Chart ONC H-13 3rd Ed, Apr 67	18

<u>NUMBER</u>	<u>NOMENCLATURE</u>	<u>IDENTIFICATION</u>	<u>FOLDER NUMBER</u>
80	<u>Kume Shima Bombing Range</u>	Located in the East * China Sea approx 50 miles West of Okinawa 126° 40' long 26° 31' lat DOD Flight Infor- mation Publication Map No. 5, 187 May 69, G2 USARPAC & Vicinity map scale 1/50,000 US Navy Map H.O. 2581 4th Ed, May 67	114
81	<u>Ukibaru Shima Training Area</u>	Located approx 4 miles * East of Okinawa in the Pacific Ocean Grid Coord CE 9908 Multiplex Map Sheet 3625 I NE Series L891	
82	<u>Tsuken Jima Training Area</u>	Grid Coord CE 9404 * 1152745 5 July 66 and Koaza Map US Navy Map H.O. Anch CE 2d Ed, Oct 51 88-06-03 Sep 53 (2 sheets) Multiplex Map Sheet 3625 I NE Series L891	99
83	<u>Mae Shima Training Area</u>	Located approx 25 miles * west of Okinawa in the East China Sea Grid Coord CD 4599 Multiplex Map 3525 I AMS Series L791	
84	<u>Kobi Sho Range</u>	Located in the East China * Sea approx 195 miles SW of Okinawa 123° 40' long 25° 50' lat DOD Flight Information Publication Map No. 5187 May 69, G2 USARPAC US Air Force Map ONC H-12 4th Ed, Apr 66	

<u>NUMBER</u>	<u>NOMENCLATURE</u>	<u>IDENTIFICATION</u>	<u>FOLDER NUMBER</u>
85	<u>Sekibi Sho Range</u>	Located in the East China* Sea, approx 190 miles SW of Okinawa 124° 40' long 25° 50' lat DOD Flight Information Publication Map No. 5,187 May 69, G2 USARPAC US Air Force Map ONC H-12 4th Ed, Apr 66	112
86	<u>Miyako Jima VORTAC Site</u>	Located approx 168 miles SW of Okinawa in the East China Sea, Hirara-shi Miyako Jima 16-06-664 30 Aug 66	20
87	<u>Miyako Jima Air Station</u>	<i>Miyako Jima Air Station</i> <i>Miyako Jima NPB Site</i> Tab No. C-1-4 15 Aug 67	19
		Located approx 168 miles SW of Okinawa in the East China Sea 125° 17' long 24° 12' lat US Navy Map H.O. 5308 2d Ed, March 69	
88	<u>Okino Daito Shima Range</u>	Located in the Pacific * Ocean approx 240 miles SSE of Okinawa 131° 20' long 24° 29' lat DOD Flight Information Publication Multiplex Map Sheet 4320 III Series L791 US Air Force Operation Navigation Chart ONC H-13 3d Ed, Apr 67	117

Note 1: In view of the release, total or partial, of certain installations and sites by the United States armed forces prior to reversion, as well as in the light of other considerations, geographical identification may be adjusted by both sides in Joint Committee process.

Note 2: With respect to the U.S. POL pipelines connecting the POL depots, the U.S. submarine cable under the territorial waters of Japan connected to Camp Sukiran, and the U.S. telecommunications cables connected to the facilities and areas, the Government of Japan will take measures necessary for the use by the United States armed forces under SOFA.

Note 3: The Installations and Sites with astrisk in the above list will have as necessary restricted water and/or air areas, to be provided in the territorial waters of Japan or to be agreed upon on the high seas, the details of which will be further discussed, on the basis of the information furnished and boundaries indicated by the U.S. side, in conjunction with the problems of detailed conditions of use (including types of weapons or exercises, hours of use and prior notification etc.) giving due regard to the Japanese interests of fishing, maritime safety, harbor control and development, navigation and aviation, with a view to reaching agreement in the Joint Committee on the day of Reversion.

The following sea or air maneuver areas will also be dealt with in the same manner as stated above:

Area India India

Area Mike Mike

Area Golf Golf

North Range

South Range

1	米局長	20	防衛施設庁 井上 法規長 鈴木
2	条局長	21	
3	橋本参事官	22	防衛庁 今村 6/10
4	末比/長	23	法務省 山崎 6/10
5	安保長	24	
6	条々長	25	
7	佐藤	26	
8	有馬	27	
9	松田	28	
10	丹波	29	
11	加藤	30	
12	法眼		
13	柳井		
14	鈴木法規長		
15	山崎		
16	辻本		
17	安藤		
18	鈴木		
19	大蔵省		岡島参事官 6/10 中支

極 秘
無 期 限
30部の内
17号

~~SECRET~~

~~(Draft, June 9, 1971)~~

MEMORANDUM OF UNDERSTANDING

The attached represent the results of discussions held between the representatives of the Government of ^{Japan} the ~~United States of America~~ and of the ^{United States of America} ~~Government of Japan~~ concerning Article III of the Agreement concerning the Ryukyu Islands and the Daito Islands signed today.

between Japan and the United States of America

Tokyo, , 1971

Ambassador Extraordinary
and Plenipotentiary of
the United States of
America to Japan

Minister for Foreign Affairs
of Japan

~~SECRET~~

~~(Draft, June 9, 1971)~~

MEMORANDUM OF UNDERSTANDING

The attached represent the results of discussions held between the representatives of the Government of the United States of America and of the Government of Japan concerning Article III of the Agreement concerning the Ryukyu Islands and the Daito Islands signed today.

2.5

3.5

4.

between the United States of America and Japan

Tokyo, , 1971

Ambassador Extraordinary
and Plenipotentiary of
the United States of
America to Japan

Minister for Foreign Affairs
of Japan

極 秘
無 期 限
30 部 の 内
17 号

~~SECRET~~

~~(Draft, June 9, 1971)~~

LIST A

The following are the installations and sites which the Government of Japan and the Government of the United States of America are prepared, unless otherwise agreed between them, to agree in the Joint Committee, within their present boundaries, or as indicated in the remarks, as facilities and areas pursuant to Article II of the Agreement under Article VI of the Treaty of Mutual Cooperation and Security between Japan and the United States of America, regarding Facilities and Areas and the Status of United States Armed Forces in Japan signed on January 19, 1960 (hereinafter referred to as the "SOFA") for the use by the United States armed forces as from the date of reversion. The agreements in the Joint Committee will be concluded on the day of entry into force of the Agreement concerning the Ryukyu Islands and the Daito Islands, and every effort will be made to complete the preparatory works well in advance of that day.

between Japan and the United States of America

SECRET

(Draft, June 9, 1971)

LIST A

The following are the installations and sites which the Government of Japan and the Government of the United States of America are prepared, unless otherwise agreed between them, to agree in the Joint Committee, within their present boundaries, or as indicated in the remarks, as facilities and areas pursuant to Article II of the Agreement under Article VI of the Treaty of Mutual Cooperation and Security between Japan and the United States of America, regarding Facilities and Areas and the Status of United States Armed Forces in Japan signed on January 19, 1960 (hereinafter referred to as the "SOFA") for the use by the United States armed forces as from the date of reversion. The agreements in the Joint Committee will be concluded on the day of entry into force of the Agreement concerning the Ryukyu Islands and the Daito Islands, and every effort will be made to complete the preparatory works well in advance of that day.

*between the United States of America
and Japan*

<u>NUMBER</u>	<u>NOMENCLATURE</u>	<u>PRESENT NOMENCLATURE</u>	<u>REMARKS</u>
1	<u>Northern ^{Maneuver} Training Area</u>	<u>Marine Northern Training Area</u>	
2	<u>Aha Training Area</u>	<u>Aha Training Area</u>	SOFA II-4(b) use
3	<u>Kawata Training Area</u>	<u>Kawata Training Area</u>	SOFA II-4(b) use
4	<u>Okuma Rest Center</u>	<u>Okuma Rest Center</u>	
5	<u>Ie Shima Auxiliary Airfield</u>	<u>Ie Shima Auxiliary Airfield</u>	
6	<u>Yaetake Communication Site</u>	<u>Yaetake ^{PPCS} Communications Site</u>	
7	<u>Gesashi Communication Site</u>	<u>LORAN Station Gesashi</u>	
8	<u>Sedake Training Area</u>	<u>Sedake Training Area No. 1</u>	SOFA II-4(b) use
9	<u>Camp Schwab</u>	<u>Camp Schwab</u>	
		<u>Camp Schwab Training Area</u>	Cf. List C.
		<u>LST Ramp Camp Schwab</u>	
10	<u>Henoko Ordnance Ammunition Depot</u>	<u>Henoko Ordnance Ammo Depot</u>	
		<u>Ammunition Ammunition Navy Ammo Storage Facilities</u>	
11	<u>Camp Hansen</u>	<u>Camp Hansen</u>	Cf. List C.
		<u>Camp Hansen Training Area</u>	Cf. List C.
12	<u>Kushi Training Area</u>	<u>Kushi Training Area</u>	SOFA II-4(b) use
13	<u>Onna Point Communication Site</u>	<u>Onna Point ^{Communications} Admin Annex</u>	

<u>NUMBER</u>	<u>NOMENCLATURE</u>	<u>PRESENT NOMENCLATURE</u>	<u>REMARKS</u>
14	<u>Camp Hardy</u>	<u>Camp H. F. Hardy</u>	
15	<u>Onna Point Site</u>	<u>Onna Point Army Annex</u>	Cf. List B.
16	<u>Yaka Training Area</u>	<u>Yaka Training Area</u>	SOFA II-4(b) use
17	<u>Gimbaru Training Area</u>	<u>Gimbaru Training Area</u>	
		<u>Kadena Site No. 3</u>	
18	<u>Yaka Rest Center</u>	<u>Yaka Rest Center</u>	
19	<u>Kin Red Beach Training Area</u>	<u>Kin ^{Red} Beach (Red Beach)</u>	
20	<u>Kin Blue Beach Training Area</u>	<u>Kin Blue Beach</u>	
21	<u>Bolo Point Trainfire Range</u>	<u>Bolo Point Trainfire Range</u>	
		<u>Kadena Site No. 1</u>	
		<u>U.S. Army Annex Bolo Point</u>	
		<u>Yomitan Army Annex No. 1</u>	
22	<u>Kadena Ammunition Storage Area</u>	<u>Kadena ^{Ammunition} Ammo Storage Annex</u>	
		<u>Site Hizagawa</u>	
		<u>Hanza ^{Ammunition} Ammo Storage Annex</u>	
		<u>Joint Ordnance Explosive Demolition Area, Yontan</u>	
		<u>Mi</u>	

- 3 - Composite Service Group

NUMBER	NOMENCLATURE	PRESENT NOMENCLATURE	REMARKS
		Army USA ESC Ammunition Ammo Storage Area	
		Annex Chibana Ordnance Ammo Depot	
		Ammunition Kadena VORTAC Site	
		Site Annex Kadena TACAN Annex	
		Ammunition Higashionna Ammo Storage Annex	Cf. List C.
23	Chibana Site	Chibana Army Annex	Cf. List B.
		Kina Radio Relay Annex	
24	Ishikawa Army Annex	Ishikawa Army Annex	
25	Yomitan Army Annex	Yomitan Army Annex No. 2	
26	Sobe Communication Site	Naval Communications Site, Sobe Annex	
		Direction Finder Site Sobe, East	Cf. List C.
27	Yomitan Auxiliary Airfield	Yomitan Auxiliary Airfield	
		Site Nakano	
29	Camp Courtney	Camp Courtney	Cf. List C.
30	Tengan Communication Site	Starcom Transmitter Site, Tengan	
28	Tengan Pier	Tengan Pier	

- 4 -

NUMBER	NOMENCLATURE	PRESENT NOMENCLATURE	REMARKS
31	Camp McTureous	Camp McTureous	
32	Camp Shields	Camp Shields	Cf. List C.
33	Camp Hauge	Camp Hauge	Cf. List C.
34	Deragawa Communication Site	Deragawa Transmitter Site	
35	Hanza Army Annex	Site Hanza	
36	Torii Communication Station	Torii Station, Sobe	
		Starcom Receiver Station, Sobe	
37	Kadena Air Base	Kadena Air Base	
		Camp Sansone	
		Kadena Housing Area State Department	
		U.S. Army Housing Area	
38	Sunabe Warehouse	Warehouse Sunabe	
		Air Force Furniture Repair Shop	
39	Sunabe Army Annex	Site Sunabe	
40	Kashiiji Army Annex	Site Kashiiji	
41	Kadena Housing Area	Kadena Housing Annex ^{Area}	
42	Koza Communication Site	Koza Radio Relay Annex	Area 1 = 33 1/2

<u>NUMBER</u>	<u>NOMENCLATURE</u>	<u>PRESENT NOMENCLATURE</u>	<u>REMARKS</u>
43	<u>Camp Kue</u>	<u>Camp Kue</u>	
44	<u>Camp Sukiran</u>	<u>Camp Sukiran</u> <u>Camp Foster</u>	
45	<u>Sukiran Communi- cation Site</u>	<u>Sukiran Propagation Annex (Sukiran Area "C")</u>	
46	<u>Awase Communi- cation Station</u>	<u>Awase Communications Annex</u> <u>Naval Air Facility Naha Transmitter Unit Awase</u>	
47	<u>Nishihara Army Annex</u>	<u>Nishihara Army Annex No. 1</u>	
48	<u>White Beach Facilities Area</u>	<u>Naval Port Facility White Beach</u> <u>Kachin Hanto Army Area</u> <u>White Beach Tank Farm</u> <u>Kadena Site No. 2</u> <u>Nishihara Army Annex No. 2</u>	Cf. List C Cf. List B.
49	<u>Awase Storage Area</u>	<u>Awase Amm^{unition} Storage Area Annex</u>	
50	<u>Kubasaki School Area</u>	<u>Camp Kubasaki</u>	Cf. List C.

<u>NUMBER</u>	<u>NOMENCLATURE</u>	<u>PRESENT NOMENCLATURE</u>	<u>REMARKS</u>
51	<u>Futenma Air Station</u>	<u>Marine Corps Air Station Futenma</u> <u>Futenma Army Annex</u> <u>Marine Corps Air Station Futenma 800 Compound</u>	<u>Communications Annex, Futenma</u>
52	<u>Camp Mercy</u>	<u>(Machinato Area "H") Camp Mercy</u>	
53	<u>Camp Boone</u>	<u>(Machinato Area "J") Camp Boone</u>	
54	<u><i>Machinato</i> Okinawa Regional Exchange Dry Storage Warehouse</u>	<u>Okinawa Regional Exchange Dry Storage Warehouse</u>	
55	<u>Machinato Service Office</u>	<u>Post Services Office</u>	
56	<u>Machinato Service Area</u>	<u>Machinato Service Area</u>	
57	<u>Machinato Service Area Annex</u>	<u>7th PSYOP Group Ware- house</u> <u>Navy Warehouse, Machinato</u>	
58	<u>Machinato Purchasing and Contracting Office</u>	<u>Purchasing & Contract- ing Office</u>	
59	<u>Urasoe Warehouse</u>	<u><i>Army</i> USA STRATCOM Warehouse</u>	
60	<u>Deputy Division Engineers Office</u>	<u>Deputy Division Engineer Western Pacific</u>	
61	<u>Machinato Housing Area</u>	<u>Naha Area "H" Machinato/Naha Housing Area (Naha Area "H")</u>	Cf. List B.
62	<u><i>Naha</i> Okinawa Regional Exchange Cold Storage</u>	<u>Okinawa Regional Exchange Cold Storage</u>	

NUMBER	NOMENCLATURE	PRESENT NOMENCLATURE	REMARKS
63	<u>Harborview Club</u>	<u>Harborview Club</u>	
64	<u>Naha Port Facilities</u>	<u>Military Port of Naha</u>	
65	<u>Naha Service Center</u>		
66	<u>Naha Air Force/ Navy Annex</u>	<u>Naha Air Force/ Navy Annex</u>	Cf. List C.
67	<u>Naha Site</u>	<u>Naha Army Annex</u>	Cf. List B.
68	<u>Chinen Site No. 1</u>	<u>Chinen Army Annex No.1</u>	Cf. List B.
69	<u>Chinen Site No. 2</u>	<u>Chinen Army Annex No.2</u>	Cf. List B.
70	<u>Shinzato Com- munication Site</u>	<u>Shinzato Com- munication Site</u>	
71	<u>Chinen Service Area</u>	<u>US Army Composite Service Group Area</u>	
72	<u>Yozadake Air Station</u>	<u>Yozadake Air Station</u>	Cf. List B and C.
73	<u>Yozadake Site</u>	<u>Yozadake Army Annex No.1</u>	Cf. List B.
74	<u>Yozadake Army Annex</u>	<u>Yozadake Army Annex No.2</u> (Site "A" and Site "B")	Cf. List B.
75	<u>South Storage Area</u>	<u>South Storage Area</u>	
76	<u>Army POL Depots</u>	<u>Camp Kue Tank Farm Nos. 1, 2</u> <u>Camp Kue Tank Farm No. 2</u> <u>Chimu-Wan Tank Farm Nos. 1, 2, 3.</u>	

NUMBER	NOMENCLATURE	PRESENT NOMENCLATURE	REMARKS
		<u>Tengan Booster Station</u>	
		<u>Camp Kue Booster Station</u>	
77	<u>Tori Shima Range</u>	<u>Ryukyu Air Range</u>	
78	<u>Irisuna Shima Range</u>	<u>Irisuna Shima Air Range</u>	
79	<u>Kume Shima Air Station</u>	<u>Kume Shima Air Station</u>	Cf. List B and C.
80	<u>Kume Shima Bombing Range</u>	<u>Kume Shima Bombing Range</u>	
81	<u>Ukibaru Shima Training Area</u>	<u>Ukibaru Training Area</u>	SOFA II-4(b) use
82	<u>Tsukun Jima Training Area</u>	<u>Tsukun Jima Training Area</u>	
83	<u>Mae Shima Training Area</u>	<u>Mae Shima Training Area</u>	SOFA II-4(b) use
84	<u>Kobi Sho Range</u>	<u>Kobi Sho Gunnery Range</u>	
85	<u>Sekibi Sho Range</u>	<u>Sekibi Sho Gunnery Range</u>	
86	<u>Miyako Jima VORTAC Site</u>	<u>Miyako VORTAC Site</u> Jima	Cf. List B.
87	<u>Miyako Jima Air Station</u>	<u>Miyako Jima Air Station</u>	Cf. List B and C.
		<u>Miyako Jima NDB Site</u>	Cf. List B.
88	<u>Okino Daito Shima Range</u>	<u>Okino Daito Shima Range</u>	

Note 1: With respect to the U.S. POL pipelines connecting the POL depots, the U. S. submarine cable under the territorial waters of Japan connected to Camp Sukiran, and the U.S. tele-communications cables connected to the facilities and areas, the Government of Japan will take measures necessary for the use by the United States armed forces under SOFA.

Note 2: There are certain facilities and areas among those listed above which will require that restricted waters be provided contiguous thereto.

Note 3: With respect to the Sea Maneuver Areas to be provided in the territorial waters of Japan and those to be agreed upon on the high seas, the two Governments will continue preparatory works.

極 秘
無 期 限
30 部 内
17 号

~~SECRET~~

~~(Draft, June 9, 1971)~~

LIST B

The following are the facilities and areas which will be returned to Japan after reversion as indicated in the remarks.

<u>NOMENCLATURE</u>	<u>PRESENT NOMENCLATURE</u>	<u>REMARKS</u>
1 Onna Point Site (No. 15)	Onna Point Army Annex	On takeover by JSDF*
2 Chibana Site (portion described under the "PRESENT NOMENCLATURE" only) (No. 23)	Chibana Army Annex	same as above
3 White Beach Facilities Area (portion described under the "PRESENT NOMENCLATURE" only) (No. 48)	Nishihara Army Annex No. 2	same as above
4 Machinato Housing Area (No. 61)	(Naha Area "H") Machinato/Naha Housing Area ←	Subject to further discussion
5 Naha Site (No. 67)	Naha Army Annex	On takeover by JSDF
6 Chinen Site No. 1 (No. 68)	Chinen Army Annex No. 1	same as above

- 2 -

<u>NOMENCLATURE</u>	<u>PRESENT NOMENCLATURE</u>	<u>REMARKS</u>
7 Chinen Site No. 2 (No. 69)	Chinen Army Annex No. 2	On takeover by JSDF
8 Yozadake Air Station (No. 72)	Yozadake Air Station	same as above
9 Yozadake Site (No. 73)	Yozadake Army Annex No. 1	same as above
10 Yozadake Army Annex (Site "A" only) (No. 74)	Yozadake Army Annex No. 2	same as above
11 Kume Shima Air Station (No. 79)	Kume Shima Air Station	same as above
12 Miyako Jima VORTAC Site (No. 86)	Miyako VORTAC Site Jima	On takeover by MOT**
13 Miyako Jima Air Station (No. 87)	Miyako Jima Air Station Miyako Jima NDB Site	On takeover by JSDF On takeover by MOT

* Japan Self Defense Forces

** Ministry of Transport

極 秘
無 期 限
30 部の内
17 号

~~SECRET~~

~~(DRAFT, June 9, 1971)~~

LIST C

The installations and sites now used by the Government of the United States of America the whole or part of which will be released on or prior to reversion include the following:

1. Naha Airport
2. Miwa NDB Site
3. Naha Air Force/Navy Annex (Japanese Government use portion)
4. Naha Tank Farm No. 2 (Yogi ~~Gasoline~~ Tank)
5. Naha Wheel *Area* *Farm*
6. White Beach Facilities (Japanese Government use portion)
7. Oku Training Area
8. Sedake Training Area No. 2
9. Motobu Quarry
10. Motobu Auxiliary Airfield
11. Ishikawa Beach
12. Tokashiki Army Annex
13. Haneji Army Annex
14. Kadena Site No. 4

- 2 -

15. Site Oki
16. Site Akamichi
17. Site Kuba
18. USA Police Sub Station Koza
19. Koza Field Office
20. Protective Shelter Awase
21. Naha Field Office
22. Direction Finder Site Sobe, West
23. Kume Shima Air Station (10.99 acres)
24. Miyako Jima Air Station (24.15 acres)
25. Yozadake Air Station (17.93 acres)
26. Camp Hansen (96.53 acres)
27. Camp Hansen Training Area (43.84 acres)
28. Camp Hauge (13.24 acres)
29. Camp Schwab Training Area (257.76 acres)
30. Higashionna Ammo Storage Annex (234.04 acres)
31. Camp Courtney (97.90 acres)
32. Camp Shields (149 acres)
33. Camp Kubasaki ~~Annex~~ (16 acres)

Note: There are also other installations and sites to be released by virtue of Article VI of the Agreement concerning the Ryukyu Islands and the Daito Islands. } *between Japan and the United States of America*

SECRET

(DRAFT, June 9, 1971)

LIST C

The installations and sites now used by the Government of the United States of America the whole or part of which will be released on or prior to reversion include the following:

1. Naha Airport
2. Miwa NDB Site
3. Naha Air Force/Navy Annex (Japanese Government use portion)
4. Naha Tank Farm No. 2 (Yogi Gasoline Tank)
5. Naha Wheel
6. White Beach Facilities (Japanese Government use portion)
7. Oku Training Area
8. Sedake Training Area No. 2
9. Motobu Quarry
10. Motobu Auxiliary Airfield
11. Ishikawa Beach
12. Tokashiki Army Annex
13. Haneji Army Annex
14. Kadena Site No. 4

15. Site Oki
16. Site Akamichi
17. Site Kuba
18. USA Police Sub Station Koza
19. Koza Field Office
20. Protective Shelter Awase
21. Naha Field Office
22. Direction Finder Site Sobe, West
23. Kume Shima Air Station (10.99 acres)
24. Miyako Jima Air Station (24.15 acres)
25. Yozadake Air Station (17.93 acres)
26. Camp Hansen (96.53 acres)
27. Camp Hansen Training Area (43.84 acres)
28. Camp Hauge (13.24 acres)
29. Camp Schwab Training Area (257.76 acres)
30. Higashionna Ammo Storage Annex (234.04 acres)
31. Camp Courtney (97.90 acres)
32. Camp Shields (149 acres)
33. Camp Kubasaki ~~Annex~~ (16 acres)

Note: There are also other installations and sites to be released by virtue of Article VI of the Agreement concerning the Ryukyu Islands and the Daito Islands.

*between the United States of America
and Japan*