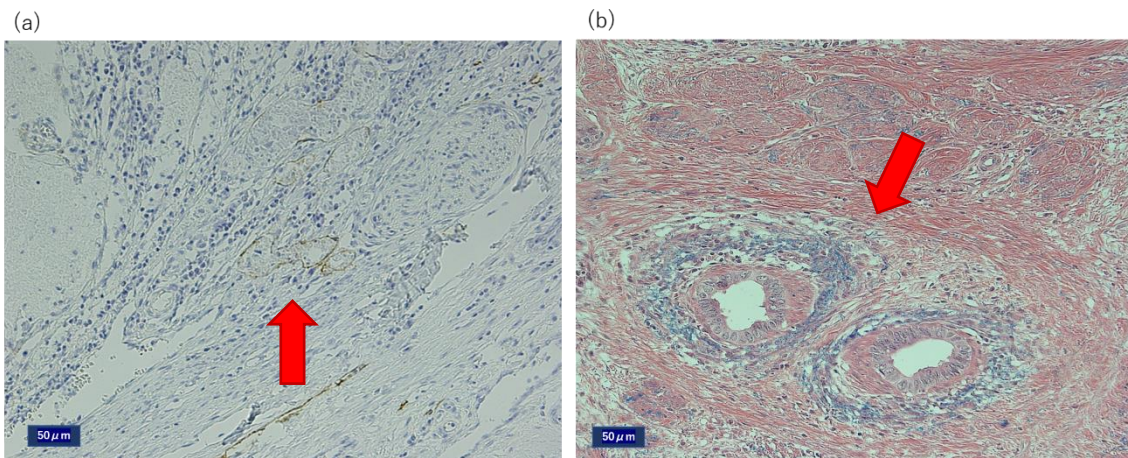


琉球大学学術リポジトリ

Usefulness of separately evaluating lymphatic and venous vessel invasion in cervical adenocarcinoma

メタデータ	言語: 出版者: University of the Ryukyus 公開日: 2021-04-20 キーワード (Ja): キーワード (En): 作成者: Taira, Yusuke, 平良, 祐介 メールアドレス: 所属:
URL	http://hdl.handle.net/20.500.12000/48289

Figure 2



(a) Lymphatic invasions observed in brown lymphatic vessels stained with D2-40 (arrow), $\times 200$.

(b) Blood vessel invasions observed microscopically using haematoxylin and eosin (H&E)–Victoria blue double staining (arrow), $\times 200$.