

# 琉球大学学術リポジトリ

## 屋久島からのスジケマダラハマキ（チョウ目ハマキガ科マダラハマキガ亜科）の記録

メタデータ	言語: en 出版者: 琉球大学資料館 (風樹館) 公開日: 2023-10-23 キーワード (Ja): キーワード (En): 作成者: 長田, 庸平 メールアドレス: 所属:
URL	<a href="http://hdl.handle.net/20.500.12000/0002020043">http://hdl.handle.net/20.500.12000/0002020043</a>



## A record of *Lopharcha psathyra* Diakonoff (Lepidoptera, Tortricidae, Chlidanotinae) from Yakushima Island, Kagoshima Prefecture

Yohei Osada

Osaka Museum of Natural History, Nagai Park 1-23, Higashisumiyoshi-ku, Osaka, 546-0034 Japan

**Abstract.** *Lopharcha psathyra* Diakonoff is newly recorded from Yakushima Island. The specimen and female genitalia are shown. This species is recorded from the Ryukyu Islands for the first time.

### Record

*Lopharcha psathyra* Diakonoff, 1989  
(Figs 1, 2)

**Specimen examined.** 1♀ (Forewing length: 8.0mm), Ookonotaki, Yakushima-cho (Yakushima Island), Kagoshima Prefecture, 27. IV. 1981, I. Kanazawa leg. The specimen is deposited in Osaka Museum of Natural History.

**Remarks.** *Lopharcha psathyra* Diakonoff, 1989 (Lepidoptera, Tortricidae, Chlidanotinae) was described based on specimens collected from Fukuoka Prefecture as a new species (Diakonoff, 1989). This species is distributed in Honshu, Shikoku and Kyushu of Japan, and the host plants are *Neolitsea sericea* (Blume) Koidz. and *Cinnamomun camphora* (Linn.) Sieb. (Nasu 2008, 2021). The wings of the Yakushima specimen have the following characteristics: wing expanse is 13–18 mm; in the forewing, ground color is grayish brown, three blackish streaks with raised scale-tufts from costa to dorsum; in the hindwing, ground color is pale brown. The female genitalia of the Yakushima specimen have the following characteristics: the signa are two bundles of spines.

The wing markings (Fig. 1) and female genitalia (Fig. 2) of the Yakushima specimen agree with those of this species shown by Diakonoff (1989) and Nasu (2008, 2021). In this study, this species is newly recorded from the Ryukyu Islands.

### References

Diakonoff, A., 1989. The occurrence of the tribe Polyorthini in Japan. *Tinea*, 12: 201–204.



Fig. 1. *Lopharcha psathyra* Diakonoff, 1989 from Yakushima Island (Scale bar: 5.0 mm).

図1. 屋久島産スジケマダラハマキ (スケールバー: 5.0 mm).

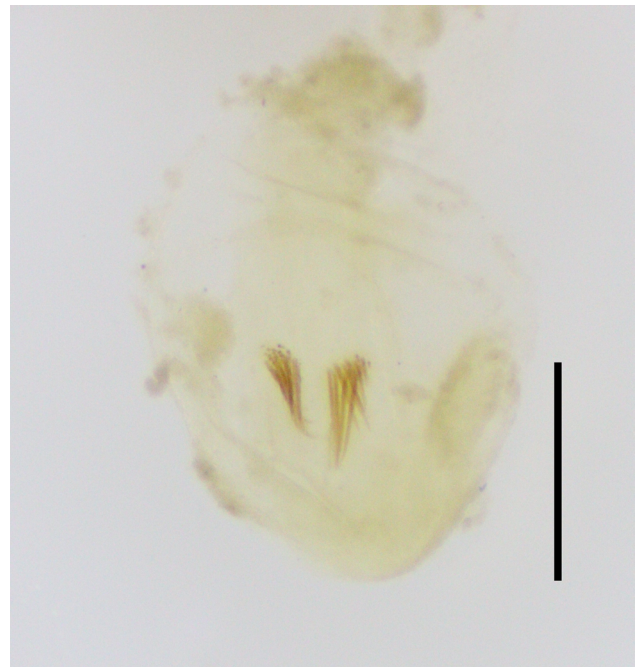


Fig. 2. Signa of female genitalia of *Lopharcha psathyra* Diakonoff, 1989 from Yakushima Island (Scale bar: 1.0 mm).

図2. 屋久島産スジケマダラハマキの雌交尾器のシグナ (スケールバー: 1.0 mm).

Nasu, Y., 2008. Immature stages of *Lopharcha* Diakonoff (Lepidoptera, Tortricidae, Chlidanotinae, Polyorthini), with description of a new species from Japan and an autapomorphy for the genus. Transactions of the Lepidopterological Society of Japan, 59(4): 267–276.

Nasu, Y., 2021. Japanese Polyorthini (Tortricidae, Chlidanotinae), with descriptions of four new species and on two newly recorded species from Japan. Tinea, 26(1): 66–78.

## 屋久島からのスジケマダラハマキ（チョウ目ハマキガ科マダラハマキガ亜科）の記録

長田庸平

〒546-0034 大阪府大阪市東住吉区長居公園  
1-23 大阪市立自然史博物館

要旨．スジケマダラハマキはこれまで日本の本州，四国，九州から知られていた．寄主植物は，クスノキ科のシロダモとクスノキである．大阪市立自然史博物館での標本調査において，屋久島産の本種の標本が確認されたので，琉球列島初記録としてここに記録する．

投稿日：2023年2月6日

受理日：2023年7月13日

発行日：2023年10月12日